

Uponor PP-RCT transition saddles, female NPT (outlet fusion)



Project Information

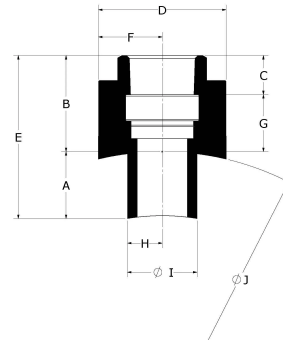
| | |
|--------------------------------|-----------------|
| Job name: | Location: |
| Engineer: | Date submitted: |
| Contractor: | Submitted by: |
| Manufacturer's representative: | Approved by: |

Technical data

| | |
|-------------------------|--------|
| Material | PP-RCT |
| Prop 65 label required? | Yes |

Product information and application use

Use Uponor Lead-Free (LF) Female NPT Transition Saddles for outlet-fusion connections to Uponor PP-RCT Mechanical Pipe to convey fluid for hydronic heating and cooling or industrial applications and for outlet-fusion connections to Uponor PP-RCT Potable Pipe to convey water for potable plumbing applications.



| Part name | Part no. | A [inch] | B [inch] | C [inch] | D [inch] | E [inch] | F [inch] | G [inch] | H [inch] | I [inch] | J [inch] |
|---|------------|----------|----------|----------|----------|----------|----------|----------|----------|----------|----------|
| Uponor PP-RCT Transition Saddle, 10" x 1", Female NPT, for Outlet Fusion | PR47910010 | 1.151 | 1.496 | 0.661 | 2.362 | 2.647 | 1.181 | 0.835 | 0.63 | 1.26 | 9.843 |
| Uponor PP-RCT Transition Saddle, 10" x 1/2", Female NPT, for Outlet Fusion | PR47910050 | 1.13 | 1.335 | 0.535 | 1.614 | 2.465 | 0.807 | 0.799 | 0.494 | 0.988 | 9.843 |
| Uponor PP-RCT Transition Saddle, 10" x 3/4", Female NPT, for Outlet Fusion | PR47910075 | 1.13 | 1.398 | 0.553 | 1.811 | 2.528 | 0.906 | 0.844 | 0.494 | 0.988 | 9.851 |
| Uponor PP-RCT Transition Saddle, 1 1/2" x 1/2", Female NPT, for Outlet Fusion | PR4791550 | 0.4 | 1.209 | 0.535 | 1.495 | 1.609 | 0.748 | 0.673 | 0.492 | 0.984 | 1.969 |
| Uponor PP-RCT Transition Saddle, 1 1/2" x 3/4", Female NPT, for Outlet Fusion | PR4791575 | 0.4 | 1.366 | 0.553 | 1.705 | 1.766 | 0.853 | 0.813 | 0.492 | 0.984 | 1.969 |
| Uponor PP-RCT Transition Saddle, 2" x 1/2", Female NPT, for Outlet Fusion | PR4792050 | 0.415 | 1.209 | 0.535 | 1.495 | 1.624 | 0.748 | 0.673 | 0.492 | 0.984 | 2.48 |
| Uponor PP-RCT Transition Saddle, 2" x 3/4", Female NPT, for Outlet Fusion | PR4792075 | 0.415 | 1.366 | 0.553 | 1.705 | 1.781 | 0.853 | 0.813 | 0.492 | 0.984 | 2.48 |
| Uponor PP-RCT Transition Saddle, 2 1/2" x 1", Female NPT, for Outlet Fusion | PR4792510 | 0.519 | 1.496 | 0.661 | 2.36 | 2.015 | 1.18 | 0.835 | 0.63 | 1.26 | 2.953 |
| Uponor PP-RCT Transition Saddle, 2 1/2" x 1/2", Female NPT, for Outlet Fusion | PR4792550 | 0.442 | 1.209 | 0.535 | 1.495 | 1.65 | 0.748 | 0.673 | 0.492 | 0.984 | 2.953 |
| Uponor PP-RCT Transition Saddle, 2 1/2" x 3/4", Female NPT, for Outlet Fusion | PR4792575 | 0.442 | 1.366 | 0.553 | 1.705 | 1.808 | 0.853 | 0.813 | 0.492 | 0.984 | 2.953 |
| Uponor PP-RCT Transition Saddle, 3" x 1", Female NPT, for Outlet Fusion | PR4793010 | 0.551 | 1.496 | 0.661 | 2.36 | 2.047 | 1.18 | 0.835 | 0.63 | 1.26 | 3.543 |
| Uponor PP-RCT Transition Saddle, 3" x 1/2", Female NPT, for Outlet Fusion | PR4793050 | 0.489 | 1.209 | 0.535 | 1.495 | 1.697 | 0.748 | 0.673 | 0.492 | 0.984 | 3.543 |
| Uponor PP-RCT Transition Saddle, 3" x 3/4", Female NPT, for Outlet Fusion | PR4793075 | 0.489 | 1.366 | 0.553 | 1.705 | 1.855 | 0.853 | 0.813 | 0.492 | 0.984 | 3.543 |
| Uponor PP-RCT Transition Saddle, 4" x 1", Female NPT, for Outlet Fusion | PR4794010 | 0.658 | 1.496 | 0.661 | 2.36 | 2.154 | 1.18 | 0.835 | 0.63 | 1.26 | 4.921 |
| Uponor PP-RCT Transition Saddle, 4" x 1/2", Female NPT, for Outlet Fusion | PR4794050 | 0.616 | 1.209 | 0.535 | 1.495 | 1.824 | 0.748 | 0.673 | 0.492 | 0.984 | 4.921 |
| Uponor PP-RCT Transition Saddle, 4" x 3/4", Female NPT, for Outlet Fusion | PR4794075 | 0.616 | 1.366 | 0.553 | 1.705 | 1.982 | 0.853 | 0.813 | 0.492 | 0.984 | 4.921 |
| Uponor PP-RCT Transition Saddle, 6" x 1", Female NPT, for Outlet Fusion | PR4796010 | 0.787 | 1.496 | 0.661 | 2.36 | 2.283 | 1.18 | 0.835 | 0.63 | 1.26 | 6.303 |
| Uponor PP-RCT Transition Saddle, 6" x 1/2", Female NPT, for Outlet Fusion | PR4796050 | 0.755 | 1.209 | 0.535 | 1.495 | 1.963 | 0.748 | 0.673 | 0.492 | 0.984 | 6.299 |
| Uponor PP-RCT Transition Saddle, 6" x 3/4", Female NPT, for Outlet Fusion | PR4796075 | 0.755 | 1.366 | 0.553 | 1.705 | 2.121 | 0.853 | 0.813 | 0.492 | 0.984 | 6.299 |
| Uponor PP-RCT Transition Saddle, 8" x 1", Female NPT, for Outlet Fusion | PR4798010 | 0.972 | 1.496 | 0.661 | 2.362 | 2.468 | 1.181 | 0.835 | 0.63 | 1.26 | 7.874 |

| | | | | | | | | | | | |
|---|-----------|-------|-------|-------|-------|-------|-------|-------|-------|-------|-------|
| Uponor PP-RCT Transition Saddle, 8" x 1/2", Female NPT, for Outlet Fusion | PR4798050 | 0.946 | 1.28 | 0.535 | 1.614 | 2.225 | 0.807 | 0.744 | 0.492 | 0.984 | 7.874 |
| Uponor PP-RCT Transition Saddle, 8" x 3/4", Female NPT, for Outlet Fusion | PR4798075 | 0.946 | 1.358 | 0.553 | 1.811 | 2.304 | 0.906 | 0.805 | 0.492 | 0.984 | 7.874 |

| Part name | Part no. | Equivalent length through [ft] | End Type 1 | End Type 2 | Operating Temperature 1 [°F] | Operating Temperature 2 [°F] | Operating Temperature 3 [°F] | Weight per UOM [lbs/UOM] |
|---|------------|--------------------------------|---------------|------------|------------------------------|------------------------------|------------------------------|--------------------------|
| Uponor PP-RCT Transition Saddle, 10" x 1", Female NPT, for Outlet Fusion | PR47910010 | 1.7 | Saddle 10" | FNPT 1" | - | - | - | 0.44 |
| Uponor PP-RCT Transition Saddle, 10" x 1/2", Female NPT, for Outlet Fusion | PR47910050 | 1.1 | Saddle 10" | FNPT 1/2" | 73 | 140 | 180 | 0.17 |
| Uponor PP-RCT Transition Saddle, 10" x 3/4", Female NPT, for Outlet Fusion | PR47910075 | 1.4 | Saddle 10" | FNPT 3/4" | 73 | 140 | 180 | 0.21 |
| Uponor PP-RCT Transition Saddle, 1 1/2" x 1/2", Female NPT, for Outlet Fusion | PR4791550 | 1.1 | Saddle 1-1/2" | FNPT 1/2" | 73 | 140 | 180 | 0.15 |
| Uponor PP-RCT Transition Saddle, 1 1/2" x 3/4", Female NPT, for Outlet Fusion | PR4791575 | 1.4 | Saddle 1-1/2" | FNPT 3/4" | 73 | 140 | 180 | 0.19 |
| Uponor PP-RCT Transition Saddle, 2" x 1/2", Female NPT, for Outlet Fusion | PR4792050 | 1.1 | Saddle 2" | FNPT 1/2" | 73 | 140 | 180 | 0.15 |
| Uponor PP-RCT Transition Saddle, 2" x 3/4", Female NPT, for Outlet Fusion | PR4792075 | 1.4 | Saddle 2" | FNPT 3/4" | 73 | 140 | 180 | 0.19 |
| Uponor PP-RCT Transition Saddle, 2 1/2" x 1", Female NPT, for Outlet Fusion | PR4792510 | 1.7 | Saddle 2-1/2" | FNPT 1" | 73 | 140 | 180 | 0.42 |
| Uponor PP-RCT Transition Saddle, 2 1/2" x 1/2", Female NPT, for Outlet Fusion | PR4792550 | 1.1 | Saddle 2-1/2" | FNPT 1/2" | 73 | 140 | 180 | 0.15 |
| Uponor PP-RCT Transition Saddle, 2 1/2" x 3/4", Female NPT, for Outlet Fusion | PR4792575 | 1.4 | Saddle 2-1/2" | FNPT 3/4" | 73 | 140 | 180 | 0.19 |
| Uponor PP-RCT Transition Saddle, 3" x 1", Female NPT, for Outlet Fusion | PR4793010 | 1.7 | Saddle 3" | FNPT 1" | 73 | 140 | 180 | 0.43 |
| Uponor PP-RCT Transition Saddle, 3" x 1/2", Female NPT, for Outlet Fusion | PR4793050 | 1.1 | Saddle 3" | FNPT 1/2" | 73 | 140 | 180 | 0.15 |
| Uponor PP-RCT Transition Saddle, 3" x 3/4", Female NPT, for Outlet Fusion | PR4793075 | 1.4 | Saddle 3" | FNPT 3/4" | 73 | 140 | 180 | 0.19 |
| Uponor PP-RCT Transition Saddle, 4" x 1", Female NPT, for Outlet Fusion | PR4794010 | 1.7 | Saddle 4" | FNPT 1" | 73 | 140 | 180 | 0.43 |
| Uponor PP-RCT Transition Saddle, 4" x 1/2", Female NPT, for Outlet Fusion | PR4794050 | 1.1 | Saddle 4" | FNPT 1/2" | 73 | 140 | 180 | 0.15 |
| Uponor PP-RCT Transition Saddle, 4" x 3/4", Female NPT, for Outlet Fusion | PR4794075 | 1.4 | Saddle 4" | FNPT 3/4" | 73 | 140 | 180 | 0.2 |
| Uponor PP-RCT Transition Saddle, 6" x 1", Female NPT, for Outlet Fusion | PR4796010 | 1.7 | Saddle 6" | FNPT 1" | 73 | 140 | 180 | 0.42 |
| Uponor PP-RCT Transition Saddle, 6" x 1/2", Female NPT, for Outlet Fusion | PR4796050 | 1.1 | Saddle 6" | FNPT 1/2" | 73 | 140 | 180 | 0.15 |
| Uponor PP-RCT Transition Saddle, 6" x 3/4", Female NPT, for Outlet Fusion | PR4796075 | 1.4 | Saddle 6" | FNPT 3/4" | 73 | 140 | 180 | 0.2 |
| Uponor PP-RCT Transition Saddle, 8" x 1", Female NPT, for Outlet Fusion | PR4798010 | 1.7 | Saddle 8" | FNPT 1" | 73 | 140 | 180 | 0.44 |
| Uponor PP-RCT Transition Saddle, 8" x 1/2", Female NPT, for Outlet Fusion | PR4798050 | 1.1 | Saddle 8" | FNPT 1/2" | 73 | 140 | 180 | 0.16 |
| Uponor PP-RCT Transition Saddle, 8" x 3/4", Female NPT, for Outlet Fusion | PR4798075 | 1.4 | Saddle 8" | FNPT 3/4" | 73 | 140 | 180 | 0.2 |

| Part name | Part no. | Codes | Standards | Listings |
|--|----------|-------------|---|---|
| Uponor PP-RCT transition saddles, female NPT (outlet fusion) | All | CMC IMC UMC | ASTM E84 NSF/ANSI 14 ASTM F2389 CSA B137.11 | ICC-ES-PMG 1106 IAPMO-R&T 8358 QAI P321-5 IAPMO K-12775 |

| Installation | Related applications |
|--------------|--|
| - | Domestic water systems Hydronic heating and cooling systems Industrial |

| Footnotes | Contact information |
|-----------|---|
| - | <p>Uponor Inc. 5925 148th Street West Apple Valley, MN 55124 T 800.321.4739 F 952.891.2008</p> <p>Uponor Ltd. 6510 Kennedy Road Mississauga, ON L5T 2X4 T 888.594.7726 F 800.638.9517</p> |