

Commercial EP flow-through multi-port tees

Project Information

Job name:	Location:
Engineer:	Date submitted:
Contractor:	Submitted by:
Manufacturer's representative:	Approved by:

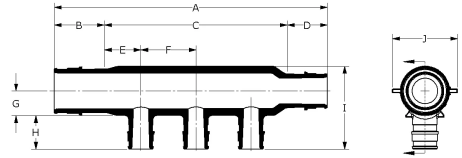
Technical data

Material	Engineered Polymer
Temp/pressure ratings	73 °F (23 °C) at 160 psi (11 bar) 180 °F (82 °C) at 100 psi (6.9 bar) 200 °F (93 °C) at 80 psi (5.5 bar)

Product Information and application use

Commercial engineered polymer (EP) flow-through multi-port tees feature 1/4" or 2" ProPEX® inlets with 3/4" or 1" ProPEX branch outlets. The tees are made of engineered polymer (EP), a high-performance material used in demanding, hot-water applications.

Note: Temperature and pressure ratings stated are hydrostatic ratings. For domestic hot-water (DHW) and DHW recirculation installations, operating conditions should not exceed 140°F (60°C) at 80 psi (5.5 bar) in accordance with ASTM F2023. For additional information regarding application-specific temperature and pressure ratings, refer to the Uponor PEX Piping Systems Design and Installation Manual.



Part name	Part no.	A [inch]	B [inch]	C [inch]	D [inch]	E [inch]	F [inch]	G [inch]	H [inch]	I [inch]	J [inch]
EP Flow-through Multi-port Tee, 3 (3/4") outlets, 1 1/4" x 1 1/4" ProPEX	Q2231373	8.19	1.445	5.3	1.445	0.9	1.75	0.7	0.955	2.336	1.82
EP Flow-through Multi-port Tee, 3 (1") outlets, 2" x 2" ProPEX	Q2232102	10.554	2.157	6.24	2.157	1.12	2.0	1.06	1.191	3.291	2.82

Part name	Part no.	Cv Through	Equivalent length branch [ft]	Equivalent length through [ft]	Cv Branch	End Type 1	End Type 2	End Type 3	Weight per UOM [lbs/UOM]
EP Flow-through Multi-port Tee, 3 (3/4") outlets, 1 1/4" x 1 1/4" ProPEX	Q2231373	42.5	-	-	9.2	ProPEX 1-1/4"	ProPEX 1-1/4"	ProPEX 3/4"	-
EP Flow-through Multi-port Tee, 3 (1") outlets, 2" x 2" ProPEX	Q2232102	99	-	-	-	ProPEX 2"	ProPEX 2"	ProPEX 1"	-

Part name	Part no.	Codes	Standards	Listings
Commercial EP flow-through multi-port tees	All	UPC IBC IRC IPC NPC of Canada UMC NSPC IMC	ASTM E814 ULC S115 ASTM F877 ASTM F1960 CSA B137.5 ULC S102.2 ASTM E119 UL 263 ULC S101	IAPMO-ES HUD MR 1269 ICC-ES-PMG cNSFus-pw UL U.P.Code cQAlus P321

In addition, the following parts have additional codes, standards, or listings:

EP Flow-through Multi-port Tee, 3 (3/4") outlets, 1 1/4" x 1 1/4" ProPEX	Q2231373	NSF/ANSI/CAN 61 NSF/ANSI 14
EP Flow-through Multi-port Tee, 3 (1") outlets, 2" x 2" ProPEX	Q2232102	NSF-61 NSF-14

Installation

Properly mount the multi-port tee by securing all adjoining PEX pipes to the framing or support structure within 6" of each ProPEX connection. For more information, refer to the Uponor Piping Systems Installation Guide.

Related applications

PEX-a Plumbing Systems

Footnotes

Contact information

Uponor Inc.
5925 148th Street West
Apple Valley, MN 55124
T 800.321.4739
F 952.891.2008

Uponor Ltd.
6510 Kennedy Road
Mississauga, ON L5T 2X4
T 888.594.7726
F 800.638.9517