

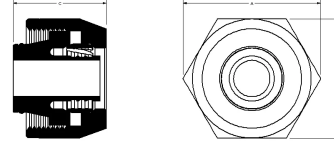
QS-style compression manifold fitting assemblies

Project Information

Job name:	Location:
Engineer:	Date submitted:
Contractor:	Submitted by:
Manufacturer's representative:	Approved by:

Technical data

Material	Brass
Temp/pressure ratings	73 °F (23 °C) at 160 psi (11 bar) 180 °F (82 °C) at 100 psi (6.9 bar) 200 °F (93 °C) at 80 psi (5.5 bar)
Prop 65 label required?	Yes



Product information and application use

The Uponor R20 Compression Fitting Assembly threads onto manifold loop outlets. This R20 QS (Quick Seal) compression fitting connects Wirsbo hePEX™ or Uponor AquaPEX® tubing to the manifold in radiant heating applications and is designed for 5/16", 3/8", 1/2" or 5/8" tubing. The R25 QS compression fitting does not directly thread onto the manifold, but onto other R25 connections, and is designed for use with 5/8" and 3/4" tubing only.

Part name	Part no.	A [inch]	B [inch]	C [inch]	Subcomponent Material	End Type 1	End Type 2	D [inch]	Cv	Equivalent length through [ft]	Weight per UOM [lbs/UOM]
5/16" QS-style Compression Fitting Assembly, R20 thread	A4020313	1.372	1.187	1.057	Fitting: CA 360 Brass	QS 5/16"	ISO 228-G 3/4"	-	-	-	0.26
3/8" QS-style Compression Fitting Assembly, R20 thread	A4020375	1.372	1.187	1.004	Fitting: CA 360 Brass	QS 3/8"	ISO 228-G 3/4"	-	-	-	0.23
1/2" QS-style Compression Fitting Assembly, R20 thread	A4020500	1.372	1.187	1.004	Fitting: CA 360 Brass	QS 1/2"	ISO 228-G 3/4"	-	-	-	0.21
5/8" QS-style Compression Fitting Assembly, R20 thread	A4020625	1.372	1.187	1.004	Fitting: CA 360 Brass	QS 5/8"	ISO 228-G 3/4"	-	-	-	0.19
5/8" QS-style Compression Fitting Assembly, R25 thread	A4030625	1.729	1.5	1.064	Fitting: CA 360 Brass	QS 5/8"	ISO 228-G 1"	-	-	-	0.4
3/4" QS-style Compression Fitting Assembly, R25 thread	A4020750	1.66	1.5	1.099	Fitting: UNS C36000 UNS C37700	QS 3/4"	ISO 228-G 1"	-	-	-	0.33
5/8" QS-style Compression Fitting Assembly for Commercial Manifold, R25 thread	A4050625	1.729	1.5	1.217	-	Compression 5/8"	ISO 228-G 1"	-	6.58	4.56	0.4
3/4" QS-style Compression Fitting Assembly for Commercial Manifold, R25 thread	A4050750	1.66	1.5	1.221	-	Compression 3/4"	ISO 228-G 1"	-	8.08	7.12	0.4

Part name	Part no.	Codes	Standards	Listings
QS-style compression manifold fitting assemblies	All	IMC IRC NBC of Canada UMC	CSA B137.5 ASTM F877	cNSFus-rfh ICC-ES-PMG 1012
In addition, the following parts have additional codes, standards, or listings:				
5/16" QS-style Compression Fitting Assembly, R20 thread	A4020313		R32: ISO 228-G 3/4"	
3/8" QS-style Compression Fitting Assembly, R20 thread	A4020375		R32: ISO 228-G 3/4"	
1/2" QS-style Compression Fitting Assembly, R20 thread	A4020500		R32: ISO 228-G 3/4"	
5/8" QS-style Compression Fitting Assembly, R20 thread	A4020625		R32: ISO 228-G 3/4"	
5/8" QS-style Compression Fitting Assembly, R25 thread	A4030625		R32: ISO 228-G 1"	
3/4" QS-style Compression Fitting Assembly, R25 thread	A4020750		R32: ISO 228-G 1"	
5/8" QS-style Compression Fitting Assembly for Commercial Manifold, R25 thread	A4050625		R25: ISO 228-G 1" NSF/ANSI 14	IAPMO-ES ICC PMG 1006
3/4" QS-style Compression Fitting Assembly for Commercial Manifold, R25 thread	A4050750		R25: ISO 228-G 1" NSF/ANSI 14	IAPMO-ES ICC PMG 1006

Installation	Related applications
The R20-threaded Compression Fitting connects to Uponor manifold loop outlets. The compression end enables direct connection to Wirsbo hePEX tubing. Use the R25-threaded Compression Fitting for other R25 connections. For more information, refer to the Radiant Floor Heating Installation Handbook.	<ul style="list-style-type: none"> Radiant Heating and Cooling Systems Permafrost Protection Systems Turf Conditioning Systems

Footnotes	Contact information
-	<p>Uponor Inc. 5925 148th Street West Apple Valley, MN 55124 T 800.321.4739 F 952.891.2008</p> <p>Uponor Ltd. 6510 Kennedy Road Mississauga, ON L5T 2X4 T 888.594.7726 F 800.638.9517</p>