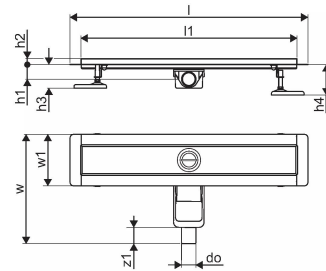
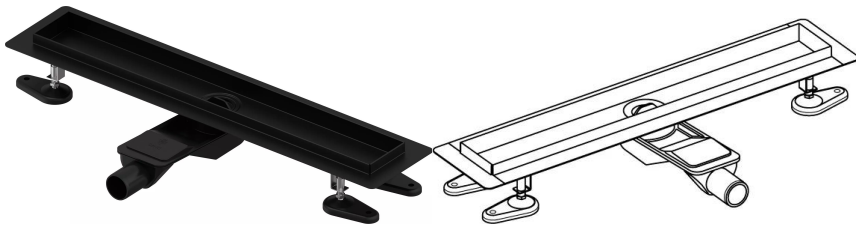


## Uponor Aqua Ambient shower inlet low black 30/1000mm

**1136416**

- compatible with various grate attachments
- for low floor construction
- flow rate: 0,6 l/s
- siphon with cleaning basket, connection to sewage pipes DN 40, with horizontal 360° alignment
- material body: stainless steel matt black powder-coated
- material siphon: polypropylene / ABS



### About Uponor Aqua Ambient shower inlet low black

#### Specification

- Modern construction and stylish design in different sizes: 600, 700, 800, 900, 1000mm
- Wide sealing collar (30mm) ensuring tight jointing to the floor construction
- Adjustable height and fixable legs for integration in every kind of floor construction
- Easy installation due to product completeness and compatibility to wastewater installation system (dimension of waste pipes)
- 360° tunable siphon

#### Application

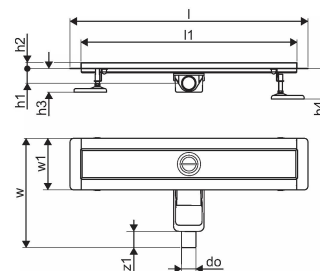
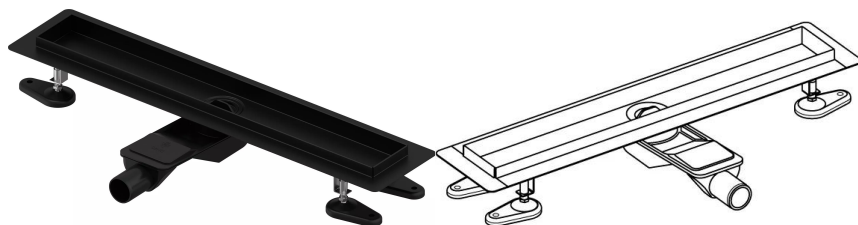
- Housing sewage systems

#### Certification

- Technical assessment acc EN 1253

## Uponor Aqua Ambient shower inlet low black 30/1000mm

1136416



### Technical data

Item no EAN	6414900483148
Item no GTIN	06414900483148
Item (unit of measurement)	pce
Length (l)	1060 mm
Length (l1)	1000 mm
Z-measurement h	98 mm
Z-measurement h1	82 mm
Z-measurement h2	40 mm
Z-measurement w	303 mm
Z-measurement w1	143 mm
Packaging Quantity 1	1
Packaging Quantity 4	50
Packaging GTIN PL1	06414900485463
Packaging GTIN PL4	06414900485661
Item Unit Length	1060
Item Unit Height	83
Item Unit Weight	2,46
Item Unit Width	143

### Technical documents

[Download documents here](#)

Uponor UK

Blackmor Lane The Pavilion  
WD18 8GA, Watford  
UK

T +44 (0)1923 927000  
E [enquiries.uk@uponor.com](mailto:enquiries.uk@uponor.com)

[www.uponor.com/en-gb](http://www.uponor.com/en-gb)