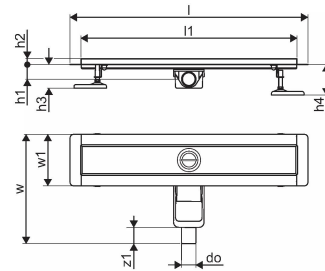
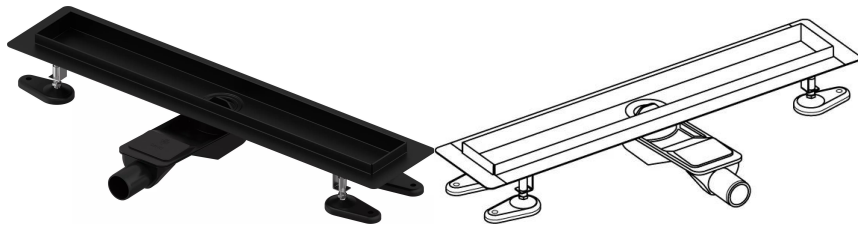


Uponor Aqua Ambient shower inlet low black 30/700mm

1136413

- compatible with various grate attachments
- for low floor construction
- flow rate: 0,6 l/s
- siphon with cleaning basket, connection to sewage pipes DN 40, with horizontal 360° alignment
- material body: stainless steel matt black powder-coated
- material siphon: polypropylene / ABS



About Uponor Aqua Ambient shower inlet low black

Specification

- Modern construction and stylish design in different sizes: 600, 700, 800, 900, 1000mm
- Wide sealing collar (30mm) ensuring tight jointing to the floor construction
- Adjustable height and fixable legs for integration in every kind of floor construction
- Easy installation due to product completeness and compatibility to wastewater installation system (dimension of waste pipes)
- 360° tunable siphon

Application

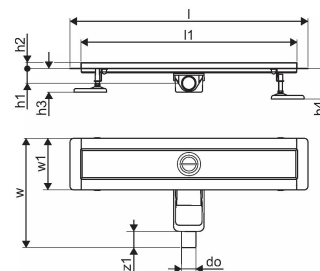
- Housing sewage systems

Certification

- Technical assessment acc EN 1253

Uponor Aqua Ambient shower inlet low black 30/700mm

1136413



Technical data

Item no EAN	6414900483117
Item no GTIN	06414900483117
Item (unit of measurement)	pce
Length (l)	760 mm
Length (l1)	700 mm
Z-measurement h	98 mm
Z-measurement h1	82 mm
Z-measurement h2	40 mm
Z-measurement w	303 mm
Z-measurement w1	143 mm
Packaging Quantity 1	1
Packaging Quantity 4	70
Packaging GTIN PL1	06414900485432
Packaging GTIN PL4	06414900485630
Item Unit Length	760
Item Unit Height	83
Item Unit Weight	1,83
Item Unit Width	143

Technical documents

[Download documents here](#)

Uponor UK

Blackmor Lane The Pavilion
WD18 8GA, Watford
UK

T +44 (0)1923 927000
E enquiries.uk@uponor.com

www.uponor.com/en-gb