

Uponor Combi Port M-Pro HeatInterface UFH 19 CB BP MS UL TL SS ZA

1093791

UFH version for domestic hot water and direct heating with underfloor heating connection (including mixing circuit with heating pump).

Dimensioning codes:

15,19 – domestic hot water capacity indication (l/min)

CB – copper brazed stainless steel heat exchanger for domestic hot water preparation

St – free of non-ferrous metal brazed stainless steel heat exchanger for domestic hot water preparation

BP – supply lines preheating function

DT – differential pressure controller at the heat interface unit heat circuit for domestic hot water preparation

ZM - circulation module for domestic hot water with safety valve, circulation pump, and differential pressure regulator. A waste water connection is needed.

MS – mixing set with heating pump, thermostat, and non-return valve for apartment heating circuit

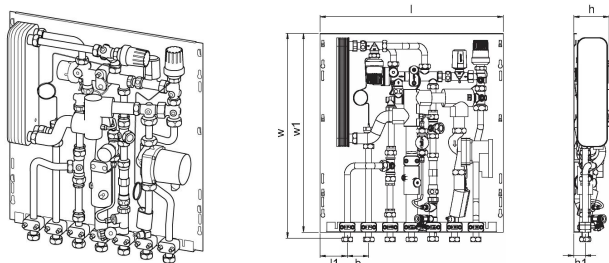
TL – thermostatic temperature limiter for domestic hot water with submersible sensor

UL – thermostatic temperature limiter for underfloor heating circuit

SS – safety thermostatic switch for apartment heating circuit

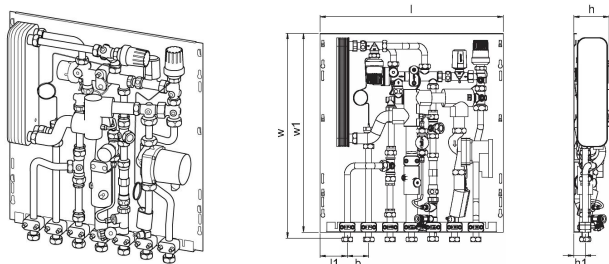
ZA - zone valve in residential heating circuit return line with 2-point actuator included

2C – second direct heating circuit connections with extra zone valve (no actuator, no mixing circuit)



Uponor Combi Port M-Pro HeatInterface UFH 19 CB BP MS UL TL SS ZA

1093791



Technical data

Item no EAN	6414905231140
Item no GTIN	06414905231140
Item (unit of measurement)	pce
Length (l)	556 mm
Length (l1)	83 mm
Z-measurement b	65 mm
Z-measurement h	107 mm
Z-measurement h1	35 mm
Z-measurement w	618 mm
Z-measurement w1	600 mm
Packaging Quantity 1	1
Packaging GTIN PL1	06414905292370
Packaging GTIN PL4	06414905292967
Item Unit Length	600
Item Unit Height	110
Item Unit Weight	16,5
Item Unit Width	555

Uponor UK

Blackmor Lane The Pavilion
WD18 8GA, Watford
UK

T +44 (0)1923 927000
E enquiries.uk@uponor.com

www.uponor.com/en-gb