

## Uponor Combi Port M-Pro HeatInterface UFH 19 CB BP DT MS UL SS ZA

### 1093789

UFH version for domestic hot water and direct heating with underfloor heating connection (including mixing circuit with heating pump).

Dimensioning codes:

15,19 – domestic hot water capacity indication (l/min)

CB – copper brazed stainless steel heat exchanger for domestic hot water preparation

St – free of non-ferrous metal brazed stainless steel heat exchanger for domestic hot water preparation

BP – supply lines preheating function

DT – differential pressure controller at the heat interface unit heat circuit for domestic hot water preparation

ZM - circulation module for domestic hot water with safety valve, circulation pump, and differential pressure regulator. A waste water connection is needed.

MS – mixing set with heating pump, thermostat, and non-return valve for apartment heating circuit

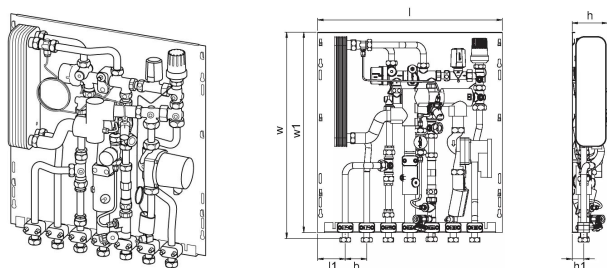
TL – thermostatic temperature limiter for domestic hot water with submersible sensor

UL – thermostatic temperature limiter for underfloor heating circuit

SS – safety thermostatic switch for apartment heating circuit

ZA - zone valve in residential heating circuit return line with 2-point actuator included

2C – second direct heating circuit connections with extra zone valve (no actuator, no mixing circuit)



## About Uponor Combi Port M-Pro HeatInterface UFH

### Specification

- port completely assembled and pressure tested
- technical limits of use in water for heating and plumbing are shown in technical data sheets
- pipe clamps made of plastic for sound protection and thermal decoupling
- DVGW certified PM Valve with patented triple-sealing technology
- thermal insulation at the supply pipes
- thermostatic bypass valve
- cold water outlet
- spacer for heat meter 110 mm x3/4"
- spacer for water meter 110 mm x3/4"
- venting and drainage valve
- strainer for cold water 0,5 mm
- strainer for primary heating supply line 0,5 mm
- Connection possibility (marked) of an electrical earthing lug
- max. operating pressure heating: PN10
- max. operating pressure sanitary: PN10
- max. operating temperature: 85 °C
- max. differential pressure primary heating: 2,5 bar
- min. pressure sanitary: 2,0 bar
- fitting material sanitary: CW617N
- fitting material heating: CW617N, CW614N
- pipe material: stainless steel 1.4401
- measurements: W/H/D 556 x 620 x 110 mm

### Application

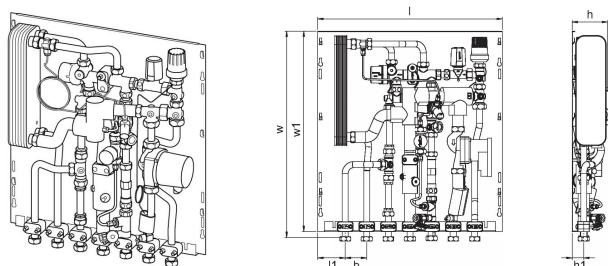
- Decentralized instantaneous domestic hot water generation
- Underfloor heating systems
- Radiator heating systems

### Certification

- DVGW approval

## Uponor Combi Port M-Pro HeatInterface UFH 19 CB BP DT MS UL SS ZA

1093789



### Technical data

Item no EAN	6414905231119
Item no GTIN	06414905231119
Item (unit of measurement)	pce
Length (l)	556 mm
Length (l1)	83 mm
Z-measurement b	65 mm
Z-measurement h	107 mm
Z-measurement h1	35 mm
Z-measurement w	618 mm
Z-measurement w1	600 mm
Packaging Quantity 1	1
Packaging Quantity 4	16
Packaging GTIN PL1	06414905292332
Packaging GTIN PL4	06414905292929
Item Unit Length	600
Item Unit Height	110
Item Unit Weight	16,5
Item Unit Width	555

### Technical documents

[Download documents here](#)

Uponor UK

Blackmor Lane The Pavilion  
WD18 8GA, Watford  
UK

T +44 (0)1923 927000  
E [enquiries.uk@uponor.com](mailto:enquiries.uk@uponor.com)

[www.uponor.com/en-gb](http://www.uponor.com/en-gb)