

Uponor Combi Port M-Pro HeatInterface RC 15 CB BP DT ZV

1093769

RC version for domestic hot water and direct heating with radiator connection (no mixing circuit).

Dimensioning codes:

15,19 – domestic hot water capacity indication (l/min)

CB – copper brazed stainless steel heat exchanger for domestic hot water preparation

St – free of non-ferrous metal brazed stainless steel heat exchanger for domestic hot water preparation

BP – supply lines preheating function

DI – primary differential pressure controller at the heat interface unit inlet

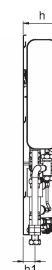
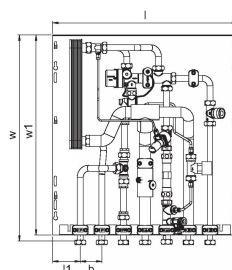
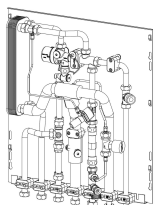
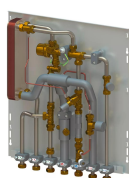
DT – differential pressure controller at the heat interface unit heat circuit for domestic hot water preparation

TL – thermostatic temperature limiter for domestic hot water with submersible sensor

RL – return temperature limiter for apartment heating circuit

ZM – circulation module for domestic hot water with safety valve, circulation pump, and differential pressure regulator. A waste water connection is needed.

ZV – zone valve in residential heating circuit return line without actuator



About Uponor Combi Port M-Pro HeatInterface RC

Specification

- port completely assembled and pressure tested
- technical limits of use in water for heating and plumbing are shown in technical data sheets
- pipe clamps made of plastic for sound protection and thermal decoupling
- DVGW certified PM Valve with patented triple-sealing technology
- thermal insulation at the supply pipes
- thermostatic bypass valve
- cold water outlet
- spacer for heat meter 110 mm x3/4"
- spacer for water meter 110 mm x3/4"
- venting and drainage valve
- strainer for cold water 0,5 mm
- strainer for primary heating supply line 0,5 mm
- Connection possibility (marked) of an electrical earthing lug
- max. operating pressure heating: PN10
- max. operating pressure sanitary: PN10
- max. operating temperature: 85 °C
- max. differential pressure primary heating: 2,5 bar
- min. pressure sanitary: 2,0 bar
- fitting material sanitary: CW617N
- fitting material heating: CW617N, CW614N
- pipe material: stainless steel 1.4401
- measurements: W/H/D 556 x 620 x 110 mm

Application

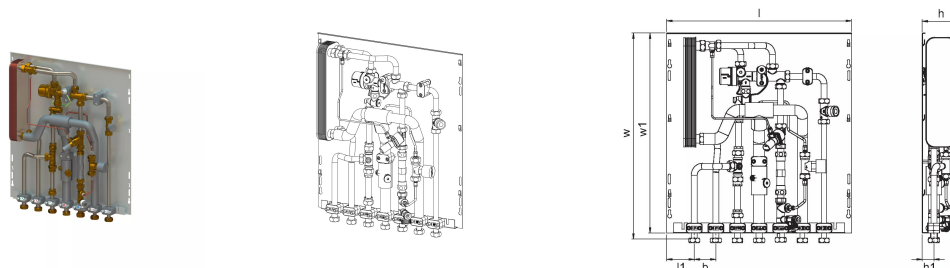
- Decentralized instantaneous domestic hot water generation
- Underfloor heating systems
- Radiator heating systems

Certification

- DVGW approval

Uponor Combi Port M-Pro HeatInterface RC 15 CB BP DT ZV

1093769



Technical data

Item no EAN	6414905230877
Item no GTIN	06414905230877
Item (unit of measurement)	pce
Length (l)	556 mm
Length (l1)	83 mm
Z-measurement b	65 mm
Z-measurement h	108 mm
Z-measurement h1	65 mm
Z-measurement w	618 mm
Z-measurement w1	600 mm
Packaging Quantity 1	1
Packaging Quantity 4	16
Packaging GTIN PL1	06414905292165
Packaging GTIN PL4	06414905292745
Item Unit Length	600
Item Unit Height	110
Item Unit Weight	11,9
Item Unit Width	555

Technical documents

[Download documents here](#)

Uponor UK

Blackmor Lane The Pavilion
WD18 8GA, Watford
UK

T +44 (0)1923 927000
E enquiries.uk@uponor.com

www.uponor.com/en-gb