

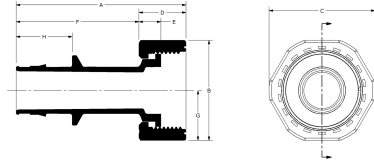
# ProPEX engineered polymer (EP) water meter fittings

## Project Information

Job name:	Location:
Engineer:	Date submitted:
Contractor:	Submitted by:
Manufacturer's representative:	Approved by:

## Technical data

Material	Engineered Polymer
Temp/pressure ratings	73 °F (23 °C) at 160 psi (11 bar) 180 °F (82 °C) at 100 psi (6.9 bar) 200 °F (93 °C) at 80 psi (5.5 bar)
Prop 65 label required?	Yes



## Product information and application use

ProPEX® engineered polymer (EP) water meter service fittings make connections for Uponor crosslinked polyethylene (PEX) tubing for use in hot or cold domestic potable water systems. Inlet PEX end is manufactured with an Uponor ProPEX fitting for connections to Uponor AquaPEX® tubing. The other end is manufactured to meet the NPSM threads of the water meter.

Note: Temperature and pressure ratings stated are hydrostatic ratings. For domestic hot-water (DHW) and DHW recirculation installations, operating conditions should not exceed 140°F (60°C) at 80 psi (5.5 bar) in accordance with ASTM F2023. For additional information regarding application-specific temperature and pressure ratings, refer to the Uponor PEX Piping Systems Design and Installation Manual.

Part name	Part no.	A [inch]	B [inch]	C [inch]	D [inch]	E [inch]	F [inch]	G [inch]	H [inch]	Subcomponent Material	End Type 1
ProPEX EP Straight Water Meter Fitting, 3/4" PEX x 1" NPSM	WS4360750	2.989	1.75	1.9	0.82	0.443	2.169	0.875	0.955	Body: Engineered Polymer Washer: EPDM Plastic nut: Engineered Polymer (EP) Metal nut: Brass	ProPEX 3/4"
ProPEX EP Straight Water Meter Fitting, 1" PEX x 1 1/4" NPSM	WS4361000	3.606	2.125	2.25	1	0.468	2.606	1.063	1.191	Body: Engineered Polymer Washer: EPDM Plastic nut: Engineered Polymer (EP) Metal nut: Brass	ProPEX 1"
ProPEX EP Elbow Water Meter Fitting, 3/4" PEX x 1" NPSM	WS4360751	1.575	1.9	1.75	0.82	0.443	1.925	0.95	-	Body: Engineered Polymer (EP) Washer: EPDM Plastic nut: Engineered polymer (EP) Metal nut: Brass	ProPEX 3/4"
ProPEX EP Elbow Water Meter Fitting, 1" PEX x 1 1/4" NPSM	WS4361001	1.941	2.25	2.125	1	0.468	2.275	1.125	-	Body: Engineered Polymer (EP) Washer: EPDM Plastic nut: Engineered polymer (EP) Metal nut: Brass	ProPEX 1"

Part name	Part no.	End Type 2	Weight per UOM [lbs/UOM]
ProPEX EP Straight Water Meter Fitting, 3/4" PEX x 1" NPSM	WS4360750	NPSM 1"	0.22
ProPEX EP Straight Water Meter Fitting, 1" PEX x 1 1/4" NPSM	WS4361000	NPSM 1-1/4"	0.3
ProPEX EP Elbow Water Meter Fitting, 3/4" PEX x 1" NPSM	WS4360751	NPSM 1"	0.24
ProPEX EP Elbow Water Meter Fitting, 1" PEX x 1 1/4" NPSM	WS4361001	NPSM 1-1/4"	0.34

Part name	Part no.	Codes	Standards	Listings
ProPEX engineered polymer (EP) water meter fittings	All	UPC IBC IRC IPC NPC of Canada UMC NSPC IMC	ASTM E814 ULC S115 ASTM F877 ASTM F1960 CSA B137.5 ULC S102.2 ASTM E119 UL 263 NSF/ANSI/CAN 61 ULC S101 ASTM E84 NSF/ANSI 14	IAPMO-ES HUD MR 1269 ICC-ES-PMG cNSFus-pw U.P.Code cQALus P321

Installation	Related applications
ProPEX tool and ProPEX rings (sold separately) are required for connecting the PEX tubing. For more information, refer to the Uponor Piping Pocket Guide.	-

Footnotes	Contact information		
-	<table border="0"> <tr> <td>Uponor Inc. 5925 148th Street West Apple Valley, MN 55124 T 800.321.4739 F 952.891.2008</td> <td>Uponor Ltd. 6510 Kennedy Road Mississauga, ON L5T 2X4 T 888.594.7726 F 800.638.9517</td> </tr> </table>	Uponor Inc. 5925 148th Street West Apple Valley, MN 55124 T 800.321.4739 F 952.891.2008	Uponor Ltd. 6510 Kennedy Road Mississauga, ON L5T 2X4 T 888.594.7726 F 800.638.9517
Uponor Inc. 5925 148th Street West Apple Valley, MN 55124 T 800.321.4739 F 952.891.2008	Uponor Ltd. 6510 Kennedy Road Mississauga, ON L5T 2X4 T 888.594.7726 F 800.638.9517		