

# EP flow-through multi-port vertical tees

## Project Information

Job name:	Location:
Engineer:	Date submitted:
Contractor:	Submitted by:
Manufacturer's representative:	Approved by:

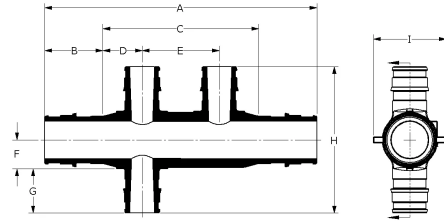
## Technical data

Material	Engineered Polymer
End type 1	ProPEX 3/4"
End type 2	ProPEX 3/4"
End type 3	ProPEX 3/4"
End type 4	ProPEX 1/2"
Temp/pressure ratings	73 °F (23 °C) at 160 psi (11 bar) 180 °F (82 °C) at 100 psi (6.9 bar) 200 °F (93 °C) at 80 psi (5.5 bar)

## Product information and application use

Engineered polymer (EP) flow-through vertical multi-port tees are designed for use in hot and cold domestic potable water distribution systems. The tee features 3/4" ProPEX® inlets and 1/2" ProPEX outlets.

Note: Temperature and pressure ratings stated are hydrostatic ratings. For domestic hot-water (DHW) and DHW recirculation installations, operating conditions should not exceed 140°F (60°C) at 80 psi (5.5 bar) in accordance with ASTM F2023. For additional information regarding application-specific temperature and pressure ratings, refer to the Uponor PEX Piping Systems Design and Installation Manual.



Part name	Part no.	A [inch]	B [inch]	C [inch]	D [inch]	E [inch]	F [inch]	G [inch]	H [inch]	I [inch]	J [inch]
EP Flow-through Multi-port Vertical Tee, 3 (1/2") outlets, 3/4" x 3/4" x 3/4" ProPEX	Q2237757	6.17	0.955	4.625	0.625	1.25	0.467	0.719	2.845	1.18	0.955
EP Flow-through Multi-port Vertical Tee, 4 (1/2") outlets, 3/4" x 3/4" x 3/4" ProPEX	Q2247757	7.42	0.955	5.875	0.625	1.25	0.467	0.719	2.845	1.18	0.955

Part name	Part no.	Cv Through	Equivalent length branch [ft]	Equivalent length through [ft]	Cv Branch	Weight per UOM [lbs/UOM]
EP Flow-through Multi-port Vertical Tee, 3 (1/2") outlets, 3/4" x 3/4" x 3/4" ProPEX	Q2237757	13.6	-	-	3.1	-
EP Flow-through Multi-port Vertical Tee, 4 (1/2") outlets, 3/4" x 3/4" x 3/4" ProPEX	Q2247757	-	-	-	3.3	-

Part name	Part no.	Codes	Standards	Listings
EP flow-through multi-port vertical tees	All	UPC IBC IRC IPC NPC of Canada UMC NSPC IMC	ASTM E814 ULC S115 ASTM F877 ASTM F1960 CSA B137.5 ULC S102.2 ASTM E119 UL 263 NSF/ANSI/CAN 61 ULC S101 NSF/ANSI 14	IAPMO-ES HUD MR 1269 ICC-ES-PMG cNSF-us-pw UL U.P.Code cQAlus P321

## Installation

Use any product designed to mount 1" copper pipe as a mounting bracket. For more information, refer to the Uponor Piping Systems Installation Guide

## Related applications

PEX-a Plumbing Systems

## Notes

- Cv branch tee to branch #2 = 3.1
- Cv through tee to tee = 13.6
- Cv through tee to side = 7.4
- Cv branch side to #2 = 3.6
- Cv through side to tee = 6.9

## Footnotes

-

## Contact information

Uponor Inc.  
5925 148th Street West  
Apple Valley, MN 55124  
T 800.321.4739  
F 952.891.2008

Uponor Ltd.  
6510 Kennedy Road  
Mississauga, ON L5T 2X4  
T 888.594.7726  
F 800.638.9517