

# ProPEX brass sweat adapters

## Project Information

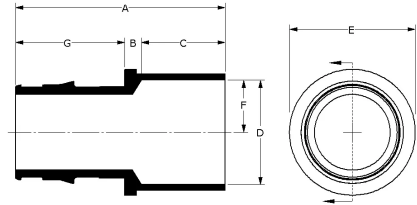
|                                |                 |
|--------------------------------|-----------------|
| Job name:                      | Location:       |
| Engineer:                      | Date submitted: |
| Contractor:                    | Submitted by:   |
| Manufacturer's representative: | Approved by:    |

## Technical data

|                         |                                                                                                                |
|-------------------------|----------------------------------------------------------------------------------------------------------------|
| Temp/pressure ratings   | 73 °F (23 °C) at 160 psi (11 bar)<br>180 °F (82 °C) at 100 psi (6.9 bar)<br>200 °F (93 °C) at 80 psi (5.5 bar) |
| Prop 65 label required? | Yes                                                                                                            |

## Product information and application use

ProPEX® brass sweat adapters transition Uponor PEX pipe to copper pipe for use in hydronic heating and cooling systems. One end of the adapter is manufactured with the Uponor ProPEX fitting for connection to Wirsbo hePEX™ pipe and the other end is manufactured to adapt copper sweat connections. These adapters are not safe for direct burial in soil. Note: Not for potable use.



Note: Temperature and pressure ratings stated are hydrostatic ratings. For domestic hot-water (DHW) and DHW recirculation installations, operating conditions should not exceed 140°F (60°C) at 80 psi (5.5 bar) in accordance with ASTM F2023. For additional information regarding application-specific temperature and pressure ratings, refer to the Uponor PEX Piping Systems Design and Installation Manual.

| Part name                                              | Part no.  | A [inch] | B [inch] | C [inch] | D [inch] | E [inch] | F [inch] | G [inch] | Cv    | Equivalent length through [ft] | Material group |
|--------------------------------------------------------|-----------|----------|----------|----------|----------|----------|----------|----------|-------|--------------------------------|----------------|
| ProPEX LF Brass Sweat Adapter, 3/8" PEX x 1/2" Copper  | LF4513850 | 1.32     | 0.229    | 0.5      | 0.629    | 0.719    | 0.315    | 0.591    | 5.7   | 2                              | LF Brass       |
| ProPEX Brass Sweat Adapter, 1/2" PEX x 1/2" Copper     | Q5515050  | 1.368    | 0.159    | 0.5      | 0.631    | 0.77     | 0.315    | 0.709    | 5.7   | 2                              | Brass          |
| ProPEX LF Brass Sweat Adapter, 1/2" PEX x 3/4" Copper  | LF4515075 | 1.634    | 0.175    | 0.75     | 0.879    | 0.987    | 0.439    | 0.709    | 5.1   | 2.7                            | LF Brass       |
| ProPEX Brass Sweat Adapter, 5/8" PEX x 1/2" Copper     | Q4516350  | 1.491    | 0.125    | 0.5      | 0.629    | 0.94     | 0.315    | 0.866    | -     | -                              | Brass          |
| ProPEX Brass Sweat Adapter, 5/8" PEX x 3/4" Copper     | Q4516375  | 1.866    | 0.25     | 0.75     | 0.879    | 1.04     | 0.439    | 0.866    | -     | -                              | Brass          |
| ProPEX Brass Sweat Adapter, 3/4" PEX x 1/2" Copper     | Q5517550  | 1.675    | 0.23     | 0.5      | 0.631    | 1.1      | 0.315    | 0.945    | 8.8   | 1.4                            | Brass          |
| ProPEX Brass Sweat Adapter, 3/4" PEX x 3/4" Copper     | Q5517575  | 1.845    | 0.15     | 0.75     | 0.881    | 1.1      | 0.441    | 0.945    | 13.4  | 2.1                            | Brass          |
| ProPEX Brass Sweat Adapter, 3/4" PEX x 1" Copper       | Q5517510  | 2.07     | 0.215    | 0.91     | 1.132    | 1.26     | 0.566    | 0.945    | 10.9  | 3.7                            | Brass          |
| ProPEX Brass Sweat Adapter, 1" PEX x 1" Copper         | Q5511010  | 2.256    | 0.165    | 0.91     | 1.132    | 1.36     | 0.566    | 1.181    | 22.1  | 2.4                            | Brass          |
| ProPEX Brass Sweat Adapter, 1 1/4" PEX x 1 1/4" Copper | Q5511313  | 2.6      | 0.185    | 0.97     | 1.382    | 1.72     | 0.691    | 1.445    | 34    | 3.9                            | Brass          |
| ProPEX Brass Sweat Adapter, 2" PEX x 2" Copper         | Q5512020  | 3.797    | 0.31     | 1.34     | 2.133    | 2.68     | 1.067    | 2.147    | 83.6  | 5.3                            | Brass          |
| ProPEX LF Brass Sweat Adapter, 3" PEX x 3" Copper      | LF4513030 | 5.33     | 0.29     | 1.66     | 3.13     | 3.79     | 1.565    | 3.38     | 189.1 | 8.79                           | LF Brass       |
| ProPEX Brass Sweat Adapter, 1 1/2" PEX x 1 1/2" Copper | Q5511515  | 3.049    | 0.255    | 1.09     | 1.633    | 1.9      | 0.817    | 1.704    | 45.5  | 4.3                            | Brass          |

| Part name                                             | Part no.  | End Type 1  | End Type 2 | Weight per UOM [lbs/UOM] |
|-------------------------------------------------------|-----------|-------------|------------|--------------------------|
| ProPEX LF Brass Sweat Adapter, 3/8" PEX x 1/2" Copper | LF4513850 | ProPEX 3/8" | Sweat 1/2" | 0.05                     |
| ProPEX Brass Sweat Adapter, 1/2" PEX x 1/2" Copper    | Q5515050  | ProPEX 1/2" | Sweat 1/2" | 0.06                     |
| ProPEX LF Brass Sweat Adapter, 1/2" PEX x 3/4" Copper | LF4515075 | ProPEX 1/2" | Sweat 3/4" | 0.09                     |
| ProPEX Brass Sweat Adapter, 5/8" PEX x 1/2" Copper    | Q4516350  | ProPEX 5/8" | Sweat 1/2" | 0.11                     |
| ProPEX Brass Sweat Adapter, 5/8" PEX x 3/4" Copper    | Q4516375  | ProPEX 5/8" | Sweat 3/4" | 0.16                     |
| ProPEX Brass Sweat Adapter, 3/4" PEX x 1/2" Copper    | Q5517550  | ProPEX 3/4" | Sweat 1/2" | 0.1                      |
| ProPEX Brass Sweat Adapter, 3/4" PEX x 3/4" Copper    | Q5517575  | ProPEX 3/4" | Sweat 3/4" | 0.15                     |

|                                                        |           |               |              |      |
|--------------------------------------------------------|-----------|---------------|--------------|------|
| ProPEX Brass Sweat Adapter, 3/4" PEX x 1" Copper       | Q5517510  | ProPEX 3/4"   | Sweat 1"     | 0.3  |
| ProPEX Brass Sweat Adapter, 1" PEX x 1" Copper         | Q5511010  | ProPEX 1"     | Sweat 1"     | 0.31 |
| ProPEX Brass Sweat Adapter, 1 1/4" PEX x 1 1/4" Copper | Q5511313  | ProPEX 1-1/4" | Sweat 1-1/4" | 0.4  |
| ProPEX Brass Sweat Adapter, 2" PEX x 2" Copper         | Q5512020  | ProPEX 2"     | Sweat 2"     | 2    |
| ProPEX LF Brass Sweat Adapter, 3" PEX x 3" Copper      | LF4513030 | ProPEX 3"     | Sweat 3"     | 2.85 |
| ProPEX Brass Sweat Adapter, 1 1/2" PEX x 1 1/2" Copper | Q5511515  | ProPEX 1-1/2" | Sweat 1-1/2" | 0.65 |

| Part name                                                                       | Part no.  | Codes                         | Standards                                    | Listings             |
|---------------------------------------------------------------------------------|-----------|-------------------------------|----------------------------------------------|----------------------|
| ProPEX brass sweat adapters                                                     | All       | IBC IRC NPC of Canada UMC IMC | ASTM F877 ASTM F1960 CSA B137.5              | IAPMO-ES ICC-ES-PMG  |
| In addition, the following parts have additional codes, standards, or listings: |           |                               |                                              |                      |
| ProPEX LF Brass Sweat Adapter, 3/8" PEX x 1/2" Copper                           | LF4513850 | UPC IPC NSPC                  | NSF/ANSI/CAN 372 NSF/ANSI/CAN 61 NSF/ANSI 14 | cNSFus-pw-G U.P.Code |
| ProPEX Brass Sweat Adapter, 1/2" PEX x 1/2" Copper                              | Q5515050  |                               | NSF-14                                       | cNSFus-rfh           |
| ProPEX LF Brass Sweat Adapter, 1/2" PEX x 3/4" Copper                           | LF4515075 | UPC IPC NSPC                  | NSF/ANSI/CAN 372 NSF/ANSI/CAN 61 NSF/ANSI 14 | cNSFus-pw-G U.P.Code |
| ProPEX Brass Sweat Adapter, 5/8" PEX x 1/2" Copper                              | Q4516350  |                               | NSF/ANSI 14                                  | cNSFus-rfh           |
| ProPEX Brass Sweat Adapter, 5/8" PEX x 3/4" Copper                              | Q4516375  |                               | NSF/ANSI 14                                  | cNSFus-rfh           |
| ProPEX Brass Sweat Adapter, 3/4" PEX x 1/2" Copper                              | Q5517550  |                               | NSF/ANSI 14                                  | cNSFus-rfh           |
| ProPEX Brass Sweat Adapter, 3/4" PEX x 3/4" Copper                              | Q5517575  |                               | NSF/ANSI 14                                  | cNSFus-rfh           |
| ProPEX Brass Sweat Adapter, 3/4" PEX x 1" Copper                                | Q5517510  |                               | NSF-14                                       | cNSFus-rfh           |
| ProPEX Brass Sweat Adapter, 1" PEX x 1" Copper                                  | Q5511010  |                               | NSF/ANSI 14                                  | cNSFus-rfh           |
| ProPEX Brass Sweat Adapter, 1 1/4" PEX x 1 1/4" Copper                          | Q5511313  |                               | NSF-14                                       | cNSFus-rfh           |
| ProPEX Brass Sweat Adapter, 2" PEX x 2" Copper                                  | Q5512020  |                               | NSF-14                                       | cNSFus-rfh           |
| ProPEX LF Brass Sweat Adapter, 3" PEX x 3" Copper                               | LF4513030 | UPC IPC NSPC                  | NSF/ANSI/CAN 372 NSF/ANSI/CAN 61 NSF/ANSI 14 | cNSFus-pw-G U.P.Code |
| ProPEX Brass Sweat Adapter, 1 1/2" PEX x 1 1/2" Copper                          | Q5511515  |                               | NSF-14                                       | cNSFus-rfh           |

| Installation                                                                                                                                                                                                                                                                                                   | Related applications                                                                                                                                                                             |
|----------------------------------------------------------------------------------------------------------------------------------------------------------------------------------------------------------------------------------------------------------------------------------------------------------------|--------------------------------------------------------------------------------------------------------------------------------------------------------------------------------------------------|
| Use the appropriate Uponor ProPEX ring for the pipe (sold separately). Do not solder within 18" of the ProPEX fitting. Refer to the Radiant Floor Heating Installation Handbook, Complete Design Assistance Manual (CDAM), or the Hydronic Piping Design Assistance Manual (HPDAM) for additional information. | <ul style="list-style-type: none"> <li>Radiant Heating and Cooling Systems</li> <li>Permafrost Protection Systems</li> <li>Turf Conditioning Systems</li> <li>Hydronic Piping Systems</li> </ul> |

| Footnotes | Contact information                                                                                                                                                                                                       |
|-----------|---------------------------------------------------------------------------------------------------------------------------------------------------------------------------------------------------------------------------|
| -         | <p>Uponor Inc.<br/>5925 148th Street West<br/>Apple Valley, MN 55124<br/>T 800.321.4739<br/>F 952.891.2008</p> <p>Uponor Ltd.<br/>6510 Kennedy Road<br/>Mississauga, ON L5T 2X4<br/>T 888.594.7726<br/>F 800.638.9517</p> |