

ProPEX lead-free (LF) brass groove fitting adapters

Project Information

Job name:	Location:
Engineer:	Date submitted:
Contractor:	Submitted by:
Manufacturer's representative:	Approved by:

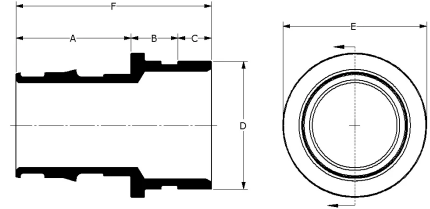
Technical data

Material	LF Brass
Temp/pressure ratings	73 °F (23 °C) at 160 psi (11 bar) 180 °F (82 °C) at 100 psi (6.9 bar) 200 °F (93 °C) at 80 psi (5.5 bar)
Prop 65 label required?	Yes

Product information and application use

ProPEX® lead-free (LF) brass copper tube size (CTS) roll-groove fitting adapters provide a direct connection to roll-groove connections designed to meet CSA B242-05. These fittings are CTS size on the roll-groove connection side.

Note: Temperature and pressure ratings stated are hydrostatic ratings. For domestic hot-water (DHW) and DHW recirculation installations, operating conditions should not exceed 140°F (60°C) at 80 psi (5.5 bar) in accordance with ASTM F2023. For additional information regarding application-specific temperature and pressure ratings, refer to the Uponor PEX Piping Systems Design and Installation Manual.



Part name	Part no.	A [inch]	B [inch]	C [inch]	D [inch]	E [inch]	F [inch]	G [inch]	Cv	Equivalent length through [ft]	End Type 1
ProPEX LF Groove Fitting Adapter, 2" PEX LF Brass x 2" CTS Groove	LFV2962020	2.147	0.89	0.61	2.124	2.68	3.647	1.062	141.4	0.99	ProPEX 2"
ProPEX LF Groove Fitting Adapter, 2" PEX LF Brass x 2 1/2" CTS Groove	LFV2962025	2.147	0.89	0.61	2.624	2.68	3.647	1.312	128.3	1.6	ProPEX 2"
ProPEX LF Groove Fitting Adapter, 2 1/2" PEX LF Brass x 2 1/2" CTS Groove	LFV2962525	2.83	0.89	0.61	2.624	3.36	4.33	1.312	222.7	1.52	ProPEX 2-1/2"
ProPEX LF Groove Fitting Adapter, 3" PEX LF Brass x 3" CTS Groove	LFV2963030	3.38	0.89	0.61	3.125	3.79	4.88	1.563	338.3	1.55	ProPEX 3"
ProPEX LF Groove Fitting Adapter, 2" PEX LF Brass x 2" IPS Groove	LFV2972020	2.147	0.875	0.625	2.375	2.68	3.647	1.187	114.5	2.34	ProPEX 2"
ProPEX LF Groove Fitting Adapter, 2" PEX LF Brass x 2 1/2" IPS Groove	LFV2972025	2.147	0.875	0.625	2.875	2.876	3.647	1.437	124	1.71	ProPEX 2"
ProPEX LF Groove Fitting Adapter, 2 1/2" PEX LF Brass x 2 1/2" IPS Groove	LFV2972525	2.83	0.875	0.625	2.875	3.36	4.33	1.437	202	7.63	ProPEX 2-1/2"
ProPEX LF Groove Fitting Adapter, 2 1/2" PEX LF Brass x 3" IPS Groove	LFV2972530	2.83	0.875	0.625	3.5	3.501	4.33	1.75	199.8	2.39	ProPEX 2-1/2"
ProPEX LF Groove Fitting Adapter, 3" PEX LF Brass x 3" IPS Groove	LFV2973030	3.38	0.875	0.625	3.5	3.79	4.88	1.75	282.4	2.77	ProPEX 3"

Part name	Part no.	End Type 2	Weight per UOM [lbs/UOM]
ProPEX LF Groove Fitting Adapter, 2" PEX LF Brass x 2" CTS Groove	LFV2962020	CTS Groove 2"	1.12
ProPEX LF Groove Fitting Adapter, 2" PEX LF Brass x 2 1/2" CTS Groove	LFV2962025	CTS Groove 2-1/2"	1.24
ProPEX LF Groove Fitting Adapter, 2 1/2" PEX LF Brass x 2 1/2" CTS Groove	LFV2962525	CTS Groove 2-1/2"	1.86
ProPEX LF Groove Fitting Adapter, 3" PEX LF Brass x 3" CTS Groove	LFV2963030	CTS Groove 3"	2.66
ProPEX LF Groove Fitting Adapter, 2" PEX LF Brass x 2" IPS Groove	LFV2972020	IPS Groove 2"	1.2
ProPEX LF Groove Fitting Adapter, 2" PEX LF Brass x 2 1/2" IPS Groove	LFV2972025	IPS Groove 2-1/2"	1.38
ProPEX LF Groove Fitting Adapter, 2 1/2" PEX LF Brass x 2 1/2" IPS Groove	LFV2972525	IPS Groove 2-1/2"	1.92
ProPEX LF Groove Fitting Adapter, 2 1/2" PEX LF Brass x 3" IPS Groove	LFV2972530	IPS Groove 3"	2.18
ProPEX LF Groove Fitting Adapter, 3" PEX LF Brass x 3" IPS Groove	LFV2973030	IPS Groove 3"	2.76

Part name	Part no.	Codes	Standards	Listings
ProPEX lead-free (LF) brass groove fitting adapters	All	UPC IBC IRC IPC NPC of Canada UMC NSPC IMC	ASTM F877 NSF/ANSI/CAN 372 ASTM F1960 CSA B137.5 NSF/ANSI/CAN 61 NSF/ANSI 14	IAPMO-ES ICC-ES-PMG cNSFus-pw-G U.P.Code
In addition, the following parts have additional codes, standards, or listings:				
ProPEX LF Groove Fitting Adapter, 2" PEX LF Brass x 2 1/2" CTS Groove	LFV2962025			
ProPEX LF Groove Fitting Adapter, 2 1/2" PEX LF Brass x 2 1/2" CTS Groove	LFV2962525			
ProPEX LF Groove Fitting Adapter, 3" PEX LF Brass x 3" CTS Groove	LFV2963030			
ProPEX LF Groove Fitting Adapter, 2 1/2" PEX LF Brass x 3" IPS Groove	LFV2972530			

Installation	Related applications
ProPEX tool and ProPEX rings (sold separately) are required for connecting the PEX tubing. For more information, refer to the Uponor AquaPEX® professional plumbing installation guide. For making roll-groove connections, follow the roll-groove fitting manufacturer's installation instructions	<ul style="list-style-type: none"> PEX-a Plumbing Systems Hydronic Radiant Heating and Cooling Systems Permafrost Protection Systems Turf Conditioning Systems

Notes

Cv = 141.4 when connecting Pex to Pex
Cv Outlet 2 = 86.1 when transitioning from Metal to Pex

Cv = 128.3 when connecting Pex to Pex
Cv Outlet 2 = 73.2 when transitioning from Metal to Pex

Cv = 222.7 when connecting Pex to Pex
Cv Outlet 2 = 138.7 when transitioning Metal to Pex

Cv = 338.3 when connecting Pex to Pex
Cv Outlet 2 = 192.3 when transitioning Metal to Pex

Cv = 114.5 when connecting Pex to Pex
Cv Outlet 2 = 79.7 when transitioning Metal to Pex

Cv = 124.0 when connecting Pex to Pex
Cv Outlet 2 = 71.6 when transitioning Metal to Pex

Cv = 202 when connecting Pex to Pex
Cv Outlet 2 = 130.2 when transitioning Metal to Pex

Cv = 199.8 when connecting Pex to Pex
Cv Outlet 2 = 114.9 when transitioning Metal to Pex

Cv = 282.4 when connecting Pex to Pex
Cv Outlet 2 = 177.4 when transitioning from Metal to Pex

Footnotes	Contact information		
-	<table border="0"> <tr> <td>Uponor Inc. 5925 148th Street West Apple Valley, MN 55124 T 800.321.4739 F 952.891.2008</td> <td>Uponor Ltd. 6510 Kennedy Road Mississauga, ON L5T 2X4 T 888.594.7726 F 800.638.9517</td> </tr> </table>	Uponor Inc. 5925 148th Street West Apple Valley, MN 55124 T 800.321.4739 F 952.891.2008	Uponor Ltd. 6510 Kennedy Road Mississauga, ON L5T 2X4 T 888.594.7726 F 800.638.9517
Uponor Inc. 5925 148th Street West Apple Valley, MN 55124 T 800.321.4739 F 952.891.2008	Uponor Ltd. 6510 Kennedy Road Mississauga, ON L5T 2X4 T 888.594.7726 F 800.638.9517		