

ProPEX lead-free (LF) brass copper press fitting adapters

Project Information

| | |
|--------------------------------|-----------------|
| Job name: | Location: |
| Engineer: | Date submitted: |
| Contractor: | Submitted by: |
| Manufacturer's representative: | Approved by: |

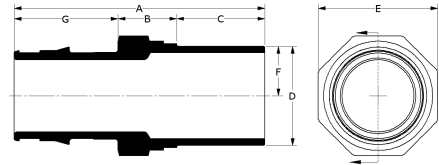
Technical data

| | |
|-------------------------|----------------------------------------------------------------------------------------------------------------|
| Material | LF Brass |
| Temp/pressure ratings | 73 °F (23 °C) at 160 psi (11 bar) 180 °F (82 °C) at 100 psi (6.9 bar) 200 °F (93 °C) at 80 psi (5.5 bar) |
| Prop 65 label required? | Yes |

Product information and application use

Uponor ProPEX®1 lead-free (LF) brass copper press fitting adapters transition copper fittings to Uponor PEX. The adapters are approved for use in hot and cold potable water and hydronic heating and cooling systems.

Note: Temperature and pressure ratings stated are hydrostatic ratings. For domestic hot-water (DHW) and DHW recirculation installations, operating conditions should not exceed 140°F (60°C) at 80 psi (5.5 bar) in accordance with ASTM F2023. For additional information regarding application-specific temperature and pressure ratings, refer to the Uponor PEX Piping Systems Design and Installation Manual.



| Part name | Part no. | A [inch] | B [inch] | C [inch] | D [inch] | E [inch] | F [inch] | G [inch] | Cv | Equivalent length through [ft] | End Type 1 |
|--------------------------------------------------------------------------|------------|----------|----------|----------|----------|----------|----------|----------|-------|--------------------------------|---------------|
| ProPEX LF Brass Copper Press Fitting Adapter, 1/2" PEX x 1/2" Copper | LFP4505050 | 2.009 | 0.553 | 0.748 | 0.624 | 0.906 | 0.312 | 0.709 | 5.6 | 2.1 | ProPEX 1/2" |
| ProPEX LF Brass Copper Press Fitting Adapter, 3/4" PEX x 3/4" Copper | LFP4507575 | 2.404 | 0.593 | 0.866 | 0.874 | 1.083 | 0.437 | 0.945 | 12.8 | 2.4 | ProPEX 3/4" |
| ProPEX LF Brass Copper Press Fitting Adapter, 1" PEX x 1" Copper | LFP4501010 | 2.851 | 0.67 | 1 | 1.125 | 1.358 | 0.563 | 1.181 | 21.4 | 3.1 | ProPEX 1" |
| ProPEX LF Brass Copper Press Fitting Adapter, 1 1/4" PEX x 1 1/4" Copper | LFP4501313 | 3.289 | 0.769 | 1.075 | 1.374 | 1.634 | 0.687 | 1.445 | 31.5 | 4.7 | ProPEX 1-1/4" |
| ProPEX LF Brass Copper Press Fitting Adapter, 1 1/2" PEX x 1 1/2" Copper | LFP4501515 | 3.88 | 0.739 | 1.437 | 1.625 | 1.85 | 0.813 | 1.704 | 43.5 | 4.8 | ProPEX 1-1/2" |
| ProPEX LF Brass Copper Press Fitting Adapter, 2" PEX x 2" Copper | LFP4502020 | 4.65 | 0.929 | 1.575 | 2.125 | 2.559 | 1.063 | 2.147 | 81.5 | 5.61 | ProPEX 2" |
| ProPEX LF Brass Copper Press Fitting Adapter, 2 1/2" PEX x 2 1/2" Copper | LFP4502525 | 5.85 | 1.406 | 1.614 | 2.624 | 3.15 | 1.312 | 2.83 | 137 | 6.89 | ProPEX 2-1/2" |
| ProPEX LF Brass Copper Press Fitting Adapter, 3" PEX x 3" Copper | LFP4503030 | 6.671 | 1.48 | 1.811 | 3.125 | 3.622 | 1.563 | 3.38 | 187.1 | 9.4 | ProPEX 3" |

| Part name | Part no. | End Type 2 | Weight per UOM [lbs/UOM] |
|--------------------------------------------------------------------------|------------|---------------------|--------------------------|
| ProPEX LF Brass Copper Press Fitting Adapter, 1/2" PEX x 1/2" Copper | LFP4505050 | Copper Press 1/2" | 0.1 |
| ProPEX LF Brass Copper Press Fitting Adapter, 3/4" PEX x 3/4" Copper | LFP4507575 | Copper Press 3/4" | 0.16 |
| ProPEX LF Brass Copper Press Fitting Adapter, 1" PEX x 1" Copper | LFP4501010 | Copper Press 1" | 0.26 |
| ProPEX LF Brass Copper Press Fitting Adapter, 1 1/4" PEX x 1 1/4" Copper | LFP4501313 | Copper Press 1-1/4" | 0.44 |
| ProPEX LF Brass Copper Press Fitting Adapter, 1 1/2" PEX x 1 1/2" Copper | LFP4501515 | Copper Press 1-1/2" | 0.62 |
| ProPEX LF Brass Copper Press Fitting Adapter, 2" PEX x 2" Copper | LFP4502020 | Copper Press 2" | 1.3 |
| ProPEX LF Brass Copper Press Fitting Adapter, 2 1/2" PEX x 2 1/2" Copper | LFP4502525 | Copper Press 2-1/2" | 2.66 |
| ProPEX LF Brass Copper Press Fitting Adapter, 3" PEX x 3" Copper | LFP4503030 | Copper Press 3" | 3.58 |

| Part name | Part no. | Codes | Standards | Listings |
|-----------------------------------------------------------|----------|--------------------------------------------|------------------------------------------------------------------------|--------------------------------------------|
| ProPEX lead-free (LF) brass copper press fitting adapters | All | UPC IBC IRC IPC NPC of Canada UMC NSPC IMC | ASME B16.51 IAPMO PS 117 ASTM F877 ICC-ES LC1002 ASTM F1960 CSA B137.5 | IAPMO-ES cNSFus-pw-G U.P.Code ICC-PMG-1412 |

In addition, the following parts have additional codes, standards, or listings:

| | | | | |
|--------------------------------------------------------------------------|------------|--|----------------------------------------------|--|
| ProPEX LF Brass Copper Press Fitting Adapter, 1/2" PEX x 1/2" Copper | LFP4505050 | | NSF-372 NSF-61 NSF-14 | |
| ProPEX LF Brass Copper Press Fitting Adapter, 3/4" PEX x 3/4" Copper | LFP4507575 | | NSF-372 NSF-61 NSF-14 | |
| ProPEX LF Brass Copper Press Fitting Adapter, 1" PEX x 1" Copper | LFP4501010 | | NSF/ANSI/CAN 372 NSF/ANSI/CAN 61 NSF/ANSI 14 | |
| ProPEX LF Brass Copper Press Fitting Adapter, 1 1/4" PEX x 1 1/4" Copper | LFP4501313 | | NSF/ANSI/CAN 372 NSF/ANSI/CAN 61 NSF/ANSI 14 | |
| ProPEX LF Brass Copper Press Fitting Adapter, 1 1/2" PEX x 1 1/2" Copper | LFP4501515 | | NSF/ANSI/CAN 372 NSF/ANSI/CAN 61 NSF/ANSI 14 | |
| ProPEX LF Brass Copper Press Fitting Adapter, 2" PEX x 2" Copper | LFP4502020 | | NSF/ANSI/CAN 372 NSF/ANSI/CAN 61 NSF/ANSI 14 | |
| ProPEX LF Brass Copper Press Fitting Adapter, 2 1/2" PEX x 2 1/2" Copper | LFP4502525 | | NSF/ANSI/CAN 372 NSF/ANSI/CAN 61 NSF/ANSI 14 | |
| ProPEX LF Brass Copper Press Fitting Adapter, 3" PEX x 3" Copper | LFP4503030 | | NSF-372 NSF-61 NSF-14 | |

| Installation | Related applications |
|-------------------------------------------------------------------------------------------------------------------------------------------------------------------------------------------------------------------------------------------------------|-------------------------------------------------------------------------------------------------|
| Use ProPEX tool and ProPEX rings (sold separately) for connecting the PEX pipe. For more information, refer to the Uponor Piping Pocket Guide. Follow press tool manufacturers' install instructions for the male or female press end of the adapter. | PEX-a Plumbing Systems Hydronic heating and cooling systems Permafrost Protection Systems |

| Footnotes | Contact information |
|-----------|-----------------------------------------------------------------------------------------------------|
| - | Uponor Inc. 5925 148th Street West Apple Valley, MN 55124 T 800.321.4739 F 952.891.2008 |
| | Uponor Ltd. 6510 Kennedy Road Mississauga, ON L5T 2X4 T 888.594.7726 F 800.638.9517 |