

# ProPEX lead-free (LF) brass male threaded adapters

## Project Information

Job name:	Location:
Engineer:	Date submitted:
Contractor:	Submitted by:
Manufacturer's representative:	Approved by:

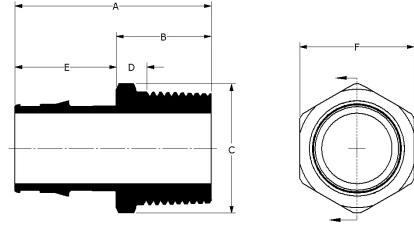
## Technical data

Material	LF Brass
Temp/pressure ratings	73 °F (23 °C) at 160 psi (11 bar) 180 °F (82 °C) at 100 psi (6.9 bar) 200 °F (93 °C) at 80 psi (5.5 bar)
Prop 65 label required?	Yes

## Product information and application use

ProPEX® Lead-free (LF) Male Threaded Adapter connects Uponor PEX tubing to male NPT threads for use in hot and cold domestic potable water systems, residential fire safety and hydronic radiant heating and cooling systems. 1 These adapters are safe for direct burial in soil

Note: Temperature and pressure ratings stated are hydrostatic ratings. For domestic hot-water (DHW) and DHW recirculation installations, operating conditions should not exceed 140°F (60°C) at 80 psi (5.5 bar) in accordance with ASTM F2023. For additional information regarding application-specific temperature and pressure ratings, refer to the Uponor PEX Piping Systems Design and Installation Manual.



Part name	Part no.	A [inch]	B [inch]	C [inch]	D [inch]	E [inch]	F [inch]	G [inch]	Cv	Equivalent length through [ft]	End Type 1
ProPEX LF Brass Male Threaded Adapter, 3/4" PEX x 3/4" NPT	LF4527575	1.945	1	1.196	0.454	0.945	1.07	0.598	11.3	2.7	ProPEX 3/4"
ProPEX LF Brass Male Threaded Adapter, 1" PEX x 1" NPT	LF4521010	2.286	1.105	1.502	0.422	1.181	1.335	0.751	19.9	3.2	ProPEX 1"
ProPEX LF Brass Male Threaded Adapter, 1 1/4" PEX x 1 1/4" NPT	LF4521313	2.55	1.105	1.925	0.398	1.445	1.68	0.963	32.4	4.2	ProPEX 1-1/4"
ProPEX LF Brass Male Threaded Adapter, 1/2" PEX x 1/2" NPT	LF4525050	1.639	0.93	0.963	0.396	0.709	0.86	0.481	5	2.3	ProPEX 1/2"
ProPEX LF Brass Male Threaded Adapter, 3/4" PEX x 1" NPT	LF4527510	2.045	1.1	1.511	0.417	0.945	1.335	0.756	10.9	3.4	ProPEX 3/4"
ProPEX LF Brass Male Threaded Adapter, 1" PEX x 3/4" NPT	LF4521075	2.201	1.02	1.404	0.474	1.181	1.25	0.702	17.8	1.2	ProPEX 1"
ProPEX LF Brass Male Threaded Adapter, 1 1/2" PEX x 1 1/2" NPT	LF4521515	2.854	1.15	2.167	0.426	1.704	1.92	1.083	39.3	5.5	ProPEX 1-1/2"
ProPEX LF Brass Male Threaded Adapter, 2" PEX x 2" NPT	LF4522020	3.543	1.396	2.6	0.639	2.147	2.375	1.3	78.6	5.61	ProPEX 2"
ProPEX LF Brass Male Threaded Adapter, 1/2" PEX x 3/4" NPT	LF4525075	1.639	0.93	1.206	0.384	0.709	1.07	0.603	6.2	-	ProPEX 1/2"
ProPEX LF Brass Male Threaded Adapter, 2 1/2" PEX x 2 1/2" NPT	LF4522525	4.83	2	3.279	0.863	2.83	2.9	1.639	227.3	1.5	ProPEX 2-1/2"
ProPEX LF Brass Male Threaded Adapter, 3" PEX x 3" NPT	LF4523030	5.38	2	3.994	0.8	3.38	3.52	1.997	187.5	9.1	ProPEX 3"
ProPEX LF Brass Male Threaded Adapter, 3/8" PEX x 1/2" NPT	LF4523850	1.521	0.93	0.963	0.396	0.591	0.86	0.481	5	2.3	ProPEX 3/8"

Part name	Part no.	End Type 2	Weight per UOM [lbs/UOM]
ProPEX LF Brass Male Threaded Adapter, 3/4" PEX x 3/4" NPT	LF4527575	MNPT 3/4"	0.2
ProPEX LF Brass Male Threaded Adapter, 1" PEX x 1" NPT	LF4521010	MNPT 1"	0.38
ProPEX LF Brass Male Threaded Adapter, 1 1/4" PEX x 1 1/4" NPT	LF4521313	MNPT 1-1/4"	0.62
ProPEX LF Brass Male Threaded Adapter, 1/2" PEX x 1/2" NPT	LF4525050	MNPT 1/2"	0.12
ProPEX LF Brass Male Threaded Adapter, 3/4" PEX x 1" NPT	LF4527510	MNPT 1"	0.32
ProPEX LF Brass Male Threaded Adapter, 1" PEX x 3/4" NPT	LF4521075	MNPT 3/4"	0.26
ProPEX LF Brass Male Threaded Adapter, 1 1/2" PEX x 1	LF4521515	MNPT 1-1/2"	0.8

1/2" NPT				
ProPEX LF Brass Male Threaded Adapter, 2" PEX x 2" NPT	LF4522020		MNPT 2"	1.45
ProPEX LF Brass Male Threaded Adapter, 1/2" PEX x 3/4" NPT	LF4525075		MNPT 3/4"	-
ProPEX LF Brass Male Threaded Adapter, 2 1/2" PEX x 2 1/2" NPT	LF4522525		MNPT 2-1/2"	3.1
ProPEX LF Brass Male Threaded Adapter, 3" PEX x 3" NPT	LF4523030		MNPT 3"	4.9
ProPEX LF Brass Male Threaded Adapter, 3/8" PEX x 1/2" NPT	LF4523850		MNPT 1/2"	0.11

Part name	Part no.	Codes	Standards	Listings
ProPEX lead-free (LF) brass male threaded adapters	All	UPC IBC IRC IPC NPC of Canada UMC NSPC IMC	ASTM F877 NSF/ANSI/CAN 372 ASTM F1960 CSA B137.5 NSF/ANSI/CAN 61 NSF/ANSI 14	IAPMO-ES ICC-ES-PMG U.P.Code

In addition, the following parts have additional codes, standards, or listings:

ProPEX LF Brass Male Threaded Adapter, 3/4" PEX x 3/4" NPT	LF4527575			cNSFus-pw-G
ProPEX LF Brass Male Threaded Adapter, 1" PEX x 1" NPT	LF4521010		UL 1821	cNSFus-pw-fs-G
ProPEX LF Brass Male Threaded Adapter, 1 1/4" PEX x 1 1/4" NPT	LF4521313		UL 1821	cNSFus-pw-fs-G
ProPEX LF Brass Male Threaded Adapter, 1/2" PEX x 1/2" NPT	LF4525050			cNSFus-pw-G
ProPEX LF Brass Male Threaded Adapter, 3/4" PEX x 1" NPT	LF4527510			cNSFus-pw-G
ProPEX LF Brass Male Threaded Adapter, 1" PEX x 3/4" NPT	LF4521075			cNSFus-pw-G
ProPEX LF Brass Male Threaded Adapter, 1 1/2" PEX x 1 1/2" NPT	LF4521515			cNSFus-pw-G
ProPEX LF Brass Male Threaded Adapter, 2" PEX x 2" NPT	LF4522020			cNSFus-pw-G
ProPEX LF Brass Male Threaded Adapter, 1/2" PEX x 3/4" NPT	LF4525075		UL 1821	cNSFus-pw-fs-G
ProPEX LF Brass Male Threaded Adapter, 2 1/2" PEX x 2 1/2" NPT	LF4522525			cNSFus-pw-G
ProPEX LF Brass Male Threaded Adapter, 3" PEX x 3" NPT	LF4523030			cNSFus-pw-G
ProPEX LF Brass Male Threaded Adapter, 3/8" PEX x 1/2" NPT	LF4523850			cNSFus-pw-G

Installation	Related applications
Use the appropriate ProPEX Ring for PEX-a tubing. Refer to the Uponor Professional Plumbing Installation Guide, AquaSAFE™ Residential Fire Sprinkler Installation Guide or Uponor Radiant Installation Handbook for additional information.	<ul style="list-style-type: none"> <li>PEX-a Plumbing Systems</li> <li>Radiant Heating and Cooling Systems</li> <li>Permafrost Protection Systems</li> <li>Turf Conditioning Systems</li> <li>AquaSAFE™ Fire Safety Systems</li> </ul>

Footnotes	Contact information
-	<p>Uponor Inc. 5925 148th Street West Apple Valley, MN 55124 T 800.321.4739 F 952.891.2008</p> <p>Uponor Ltd. 6510 Kennedy Road Mississauga, ON L5T 2X4 T 888.594.7726 F 800.638.9517</p>