

ProPEX lead-free (LF) brass sweat fitting adapters

Project Information

| | |
|--------------------------------|-----------------|
| Job name: | Location: |
| Engineer: | Date submitted: |
| Contractor: | Submitted by: |
| Manufacturer's representative: | Approved by: |

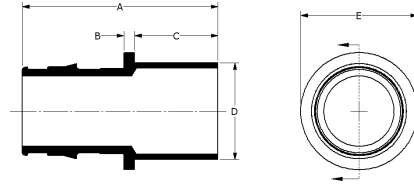
Technical data

| | |
|-------------------------|--|
| Material | LF Brass |
| Temp/pressure ratings | 73 °F (23 °C) at 160 psi (11 bar) 180 °F (82 °C) at 100 psi (6.9 bar) 200 °F (93 °C) at 80 psi (5.5 bar) |
| Prop 65 label required? | Yes |

Product information and application use

ProPEX® lead-free (LF) brass fitting adapters transition PEX tubing to copper fittings. 1 These adapters are approved for use in hot and cold domestic potable water systems and hydronic radiant heating systems. One end of the adapter is manufactured with an Uponor ProPEX fitting for connections to Wirsbo hePEX™ tubing or Uponor AquaPEX® tubing. These adapters are safe for direct burial in soil.

Note: Temperature and pressure ratings stated are hydrostatic ratings. For domestic hot-water (DHW) and DHW recirculation installations, operating conditions should not exceed 140°F (60°C) at 80 psi (5.5 bar) in accordance with ASTM F2023. For additional information regarding application-specific temperature and pressure ratings, refer to the Uponor PEX Piping Systems Design and Installation Manual.



| Part name | Part no. | A [inch] | B [inch] | C [inch] | D [inch] | E [inch] | F [inch] | G [inch] | End Type 1 | End Type 2 | Weight per UOM [lbs/UOM] |
|---|-----------|----------|----------|----------|----------|----------|----------|----------|---------------|--------------|--------------------------|
| ProPEX LF Brass Sweat Fitting Adapter, 1/2" PEX x 1/2" Copper | LF4505050 | 1.394 | 0.125 | 0.56 | 0.624 | 0.77 | 0.312 | 0.709 | ProPEX 1/2" | Sweat 1/2" | 0.06 |
| ProPEX LF Brass Sweat Fitting Adapter, 1/2" PEX x 3/4" Copper | LF4505075 | 1.644 | 0.125 | 0.81 | 0.874 | 0.916 | 0.437 | 0.709 | ProPEX 1/2" | Sweat 3/4" | 0.08 |
| ProPEX LF Brass Sweat Fitting Adapter, 3/4" PEX x 1/2" Copper | LF4507550 | 1.63 | 0.125 | 0.56 | 0.624 | 1.1 | 0.312 | 0.945 | ProPEX 3/4" | Sweat 1/2" | 0.09 |
| ProPEX LF Brass Sweat Fitting Adapter, 3/4" PEX x 3/4" Copper | LF4507575 | 1.88 | 0.125 | 0.81 | 0.874 | 1.1 | 0.437 | 0.945 | ProPEX 3/4" | Sweat 3/4" | 0.12 |
| ProPEX LF Brass Sweat Fitting Adapter, 1" PEX x 1" Copper | LF4501010 | 2.276 | 0.125 | 0.97 | 1.126 | 1.36 | 0.563 | 1.181 | ProPEX 1" | Sweat 1" | 0.19 |
| ProPEX LF Brass Sweat Fitting Adapter, 1 1/4" PEX x 1 1/4" Copper | LF4501313 | 2.6 | 0.125 | 1.03 | 1.374 | 1.64 | 0.687 | 1.445 | ProPEX 1-1/4" | Sweat 1-1/4" | 0.4 |
| ProPEX LF Brass Sweat Fitting Adapter, 1 1/2" PEX x 1 1/2" Copper | LF4501515 | 2.989 | 0.125 | 1.16 | 1.624 | 1.85 | 0.812 | 1.704 | ProPEX 1-1/2" | Sweat 1-1/2" | 0.5 |
| ProPEX LF Brass Sweat Fitting Adapter, 2" PEX x 2" Copper | LF4502020 | 3.807 | 0.25 | 1.41 | 2.124 | 2.6 | 1.062 | 2.147 | ProPEX 2" | Sweat 2" | 0.8 |
| ProPEX LF Brass Sweat Fitting Adapter, 3/4" PEX x 1" Copper | LF4507510 | 2.04 | 0.125 | 0.97 | 1.124 | 1.17 | 0.562 | 0.945 | ProPEX 3/4" | Sweat 1" | 0.14 |

| Part name | Part no. | Codes | Standards | Listings |
|---|-----------|--|--|--|
| ProPEX lead-free (LF) brass sweat fitting adapters | All | UPC IBC IRC IPC NPC of Canada UMC USEHC NSPC IMC | ASTM F877 ASTM F1960 CSA B137.5 | HUD MR 1269 CC-ES-PMG cNSFus-pw-G U.P.Code |
| In addition, the following parts have additional codes, standards, or listings: | | | | |
| ProPEX LF Brass Sweat Fitting Adapter, 1/2" PEX x 1/2" Copper | LF4505050 | | NSF/ANSI/CAN 372 NSF/ANSI/CAN 61 NSF/ANSI 14 | |
| ProPEX LF Brass Sweat Fitting Adapter, 1/2" PEX x 3/4" Copper | LF4505075 | | NSF/ANSI/CAN 372 NSF/ANSI/CAN 61 NSF/ANSI 14 | |
| ProPEX LF Brass Sweat Fitting Adapter, 3/4" PEX x 1/2" Copper | LF4507550 | | NSF/ANSI/CAN 372 NSF/ANSI/CAN 61 NSF/ANSI 14 | |
| ProPEX LF Brass Sweat Fitting Adapter, 3/4" PEX x 3/4" Copper | LF4507575 | | NSF/ANSI/CAN 372 NSF/ANSI/CAN 61 NSF/ANSI 14 | |
| ProPEX LF Brass Sweat Fitting Adapter, 1" PEX x 1" Copper | LF4501010 | | NSF/ANSI/CAN 372 NSF/ANSI/CAN 61 NSF/ANSI 14 | |
| ProPEX LF Brass Sweat Fitting Adapter, 1 1/4" PEX x 1 1/4" Copper | LF4501313 | | NSF-372 NSF-61 NSF-14 | |
| ProPEX LF Brass Sweat Fitting Adapter, 1 1/2" PEX x 1 1/2" Copper | LF4501515 | | NSF-372 NSF-61 NSF-14 | |
| ProPEX LF Brass Sweat Fitting Adapter, 2" PEX x 2" Copper | LF4502020 | | NSF/ANSI/CAN 372 NSF/ANSI/CAN 61 NSF/ANSI 14 | |
| ProPEX LF Brass Sweat Fitting Adapter, 3/4" PEX x 1" Copper | LF4507510 | | NSF/ANSI/CAN 372 NSF/ANSI/CAN 61 NSF/ANSI 14 | |

| Installation | Related applications |
|---|---|
| ProPEX tool and ProPEX rings (sold separately) are required for connecting the PEX tubing. Do not solder within 18" of ProPEX fittings. For more information, refer to the AquaPEX Professional Plumbing Installation Guide or Radiant Floor Heating Installation Handbook. | <ul style="list-style-type: none"> PEX-a Plumbing Systems Radiant Heating and Cooling Systems Permafrost Protection Systems Turf Conditioning Systems |

| Footnotes | Contact information |
|-----------|---|
| - | <p>Uponor Inc. 5925 148th Street West Apple Valley, MN 55124 T 800.321.4739 F 952.891.2008</p> <p>Uponor Ltd. 6510 Kennedy Road Mississauga, ON L5T 2X4 T 888.594.7726 F 800.638.9517</p> |