

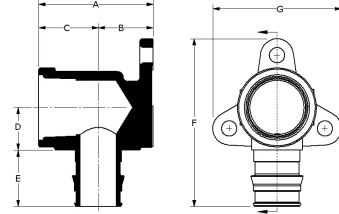
# ProPEX lead-free (LF) brass drop ear elbow adapters

## Project information

Job name:	Location:
Engineer:	Date submitted:
Contractor:	Submitted by:
Manufacturer's representative:	Approved by:

## Technical data

Material	LF Brass
Temp/pressure ratings	73 °F (23 °C) at 160 psi (11 bar) 180 °F (82 °C) at 100 psi (6.9 bar) 200 °F (93 °C) at 80 psi (5.5 bar)
Prop 65 label required?	Yes



## Product information and application use

Uponor offers the ProPEX® Lead-free Drop Ear Brass Elbow for use in hot and cold domestic potable water systems.<sup>1</sup> One end of the adapter connects to female iron pipe (FIP) and the other end includes an Uponor ProPEX fitting for connections to Uponor AquaPEX® tubing.

Note: Temperature and pressure ratings stated are hydrostatic ratings. For domestic hot-water (DHW) and DHW recirculation installations, operating conditions should not exceed 140°F (60°C) at 80 psi (5.5 bar) in accordance with ASTM F2023. For additional information regarding application-specific temperature and pressure ratings, refer to the Uponor PEX Piping Systems Design and Installation Manual.

Part name	Part no.	A [inch]	B [inch]	C [inch]	D [inch]	E [inch]	F [inch]	G [inch]	H [inch]	End Type 1	End Type 2
ProPEX LF Brass Drop Ear Elbow, 1/2" PEX x 3/8" FIP	LF4235038	1.696	0.653	1.043	0.531	0.709	2.203	1.926	0.939	ProPEX 1/2"	FNPT 3/8"
ProPEX LF Brass Drop Ear Elbow, 1/2" PEX x 1/2" FIP	LF4235050	1.696	0.653	1.043	0.531	0.709	2.203	1.926	0.934	ProPEX 1/2"	FNPT 1/2"
ProPEX LF Brass Drop Ear Elbow, 3/4" PEX x 3/4" FIP	LF4237575	1.92	0.92	1	0.71	0.945	2.805	2.154	0.9	ProPEX 3/4"	FNPT 3/4"
ProPEX LF Brass Drop Ear Elbow, 1" PEX x 1" FIP	LF4231010	2.45	1.1	1.35	0.85	1.181	3.326	2.481	1.245	ProPEX 1"	FNPT 1"

Part name	Part no.	Weight per UOM [lbs/UOM]
ProPEX LF Brass Drop Ear Elbow, 1/2" PEX x 3/8" FIP	LF4235038	0.27
ProPEX LF Brass Drop Ear Elbow, 1/2" PEX x 1/2" FIP	LF4235050	0.2
ProPEX LF Brass Drop Ear Elbow, 3/4" PEX x 3/4" FIP	LF4237575	0.47
ProPEX LF Brass Drop Ear Elbow, 1" PEX x 1" FIP	LF4231010	0.87

Part name	Part no.	Codes	Standards	Listings
ProPEX lead-free (LF) brass drop ear elbow adapters	All	UPC IBC IRC IPC NPC of Canada UMC NSPC IMC	ASTM F877 NSF/ANSI/CAN 372 ASTM F1960 CSA B137.5 NSF/ANSI/CAN 61 NSF/ANSI 14	ICC-ES-PMG cNSFus-pw-G U.P.Code

In addition, the following parts have additional codes, standards, or listings:

ProPEX LF Brass Drop Ear Elbow, 3/4" PEX x 3/4" FIP	LF4237575
---	-----------

## Installation

A ProPEX Ring is required for making ProPEX connections. Use the appropriate ProPEX Ring for tubing. For more information, refer to the Uponor Professional Plumbing Installation Guide.

## Related applications

PEX-a Plumbing Systems

## Footnotes

## Contact information

Uponor Inc.  
5925 148th Street West  
Apple Valley, MN 55124  
T 800.321.4739  
F 952.891.2008

Uponor Ltd.  
6510 Kennedy Road  
Mississauga, ON L5T 2X4  
T 888.594.7726  
F 800.638.9517