

# QS-style copper adapters

## Project Information

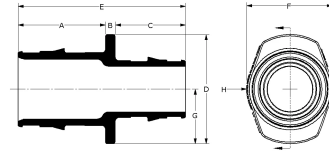
|                                |                 |
|--------------------------------|-----------------|
| Job name:                      | Location:       |
| Engineer:                      | Date submitted: |
| Contractor:                    | Submitted by:   |
| Manufacturer's representative: | Approved by:    |

## Technical data

|                         |  |
|-------------------------|--|
| Material                | Brass  |
| Temp/pressure ratings   | 73 °F (23 °C) at 160 psi (11 bar)<br>180 °F (82 °C) at 100 psi (6.9 bar)<br>200 °F (93 °C) at 80 psi (5.5 bar) |
| Prop 65 label required? | Yes  |

## Product information and application use

The Uponor QS-style Copper Adapters, combined with the appropriate QS-style Fitting Assembly, transition Wirsbo hePEX™ or Uponor AquaPEX® tubing to 1/2" and 3/4" copper pipe in hydronic heating applications.



| Part name  | Part no. | A [Inch] | B [Inch] | C [Inch] | D [Inch] | E [Inch] | F [Inch] | G [Inch] | H [Inch] | End Type 1     | End Type 2 |
|--|----------|----------|----------|----------|----------|----------|----------|----------|----------|----------------|------------|
| QS-style Copper Adapter, R20 x 3/4" Copper                                 | A4332075 | 0.512    | 0.275    | 0.612    | 1.224    | 1.399    | 1.063    | 0.612    | 0.531    | ISO 228-G 3/4" | Sweat 3/4" |
| QS-style Copper Adapter, R25 x 3/4" Copper (for 3/4" and 5/8" tubing only) | A4332575 | 0.599    | 0.299    | 1.038    | 1.585    | 1.375    | 1.936    | 1.309    | 1.124    | ISO 228-G 1"   | Sweat 3/4" |
| QS-style Copper Adapter, R20 x 1/2" Copper                                 | A4332050 | 0.527    | 0.26     | 0.512    | 1.224    | 1.299    | 1.063    | 0.612    | 0.531    | ISO 228-G 3/4" | Sweat 1/2" |

| Part name  | Part no. | Weight per UOM [lbs/UOM] |
|--|----------|--------------------------|
| QS-style Copper Adapter, R20 x 3/4" Copper                                 | A4332075 | 0.14                     |
| QS-style Copper Adapter, R25 x 3/4" Copper (for 3/4" and 5/8" tubing only) | A4332575 | 0.3                      |
| QS-style Copper Adapter, R20 x 1/2" Copper                                 | A4332050 | 0.14                     |

| Part name   | Part no. | Codes | Standards           | Listings |
|---|----------|-------|---------------------|----------|
| QS-style copper adapters  | All      | -     | ASTM F877           | -        |
| In addition, the following parts have additional codes, standards, or listings: |          |       |                     |          |
| QS-style Copper Adapter, R20 x 3/4" Copper                                      | A4332075 |       | R20: ISO 228-G 3/4" |          |
| QS-style Copper Adapter, R25 x 3/4" Copper (for 3/4" and 5/8" tubing only)      | A4332575 |       | R25: ISO 228-G 1"   |          |
| QS-style Copper Adapter, R20 x 1/2" Copper                                      | A4332050 |       | R20: ISO 228-G 3/4" |          |

## Installation

The corresponding compression fitting threads onto the R20 or R25 thread to adapt to copper. For additional information, refer to the Uponor Radiant Floor Heating Installation Handbook.

## Related applications

- Radiant Heating and Cooling Systems
- Permafrost Protection Systems
- Turf Conditioning Systems

## Footnotes

## Contact information

Uponor Inc.  
5925 148th Street West  
Apple Valley, MN 55124  
T 800.321.4739  
F 952.891.2008

Uponor Ltd.  
6510 Kennedy Road  
Mississauga, ON L5T 2X4  
T 888.594.7726  
F 800.638.9517