

Referencer

## Grand Poet Hotel by Samarah



### Uponors rolle



## Grand Poet Hotel by Samarah, Riga

Historical building in heart of Riga. Universal Uponor MLC materials were used in the hotel water supply and radiator heating system.

It is the first artist built hotel in Riga comprising a modern art and bohemian lifestyle. The hotel building has the ancient and colourful history, preservation of which has required a special care during the renovation process.

### Projektfakta:

Location	Færdiggørelse	
Riga, Latvia	2018	
Bygningstype	Product systems	
Hotel	Gulvarme- og køling	
Adresse	Hjemmside	Projekttype
Raina bulvaris 5/6, Riga, Latvia, LV1050	<a href="https://grandpoet.semarahotels.com/?lang=en">https://grandpoet.semarahotels.com/?lang=en</a>	Renovation

### Partnere

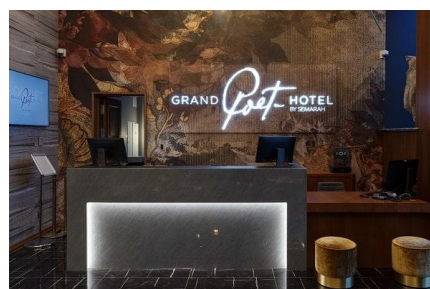
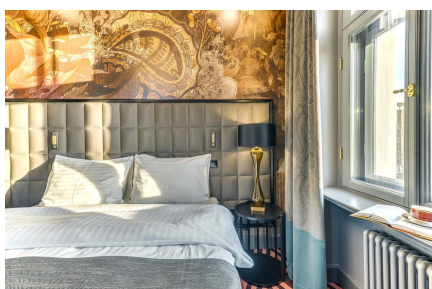
Architect: Sarma & Norde

Interior: Stylt Trampoli

## Short description

A new hotel with 168 stylish rooms and extra luxurious apartments. Here everything is in one place – a restaurant for a new and sophisticated gastronomic experience, modern event and conference rooms, spacious Wellness center, as well as three elegant SPA rooms that are going to be open in early spring. The hotel is a pearl for design idolaters, free-livers and cultural experiences. Universal Uponor MLC materials were used in the hotel water supply and radiator heating systems.

### Grand Poet Hotel by Samarah, Riga



**uponor**

Kontakt os

Uponor A/S  
Kornmarksvej 21  
2605 Brøndby

W [www.uponor.com](http://www.uponor.com)

Uponor Infra  
Bødkervej 5  
4450 Jyderup